

Date	Group	No.	Page
8.2008	<b>215</b>	<b>41</b>	1(4)

Camshaft Wear, Check  
Volvo 11L, 13L and 16L Engines

## Camshaft Wear, Check

This information contains the proper procedure to check the camshaft for wear and damage on Volvo 11L, 13L and 16L engines.

### Contents

- “Camshaft Wear, Checking” page 2

**Note:** Information is subject to change without notice.  
Illustrations are used for reference only and may differ slightly from the actual vehicle being serviced. However, key components addressed in this information are represented as accurately as possible.

## **2154-06-02-01**

### **Camshaft Wear, Checking**

**1**

Remove the valve cover from the engine. Refer to Group 21 for service procedures.

**2**

Install the engine turning tool.

---

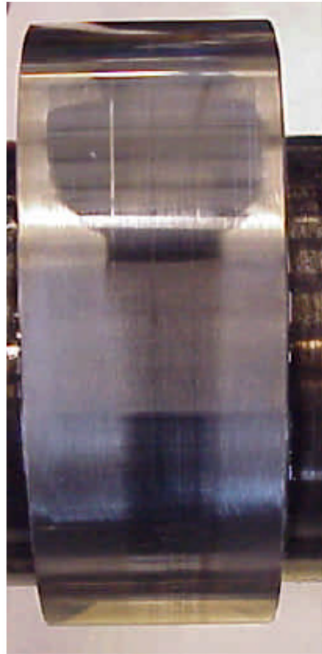
9996956 or , 88800014

**3**

Turn the camshaft using the cranking tool. Check the camshaft with regard to wear on the camshaft lobes and damage to the surfaces.

**Note:** Unevenness can develop on cam lobe surfaces during normal operation. This does **not** mean the camshaft must be changed.

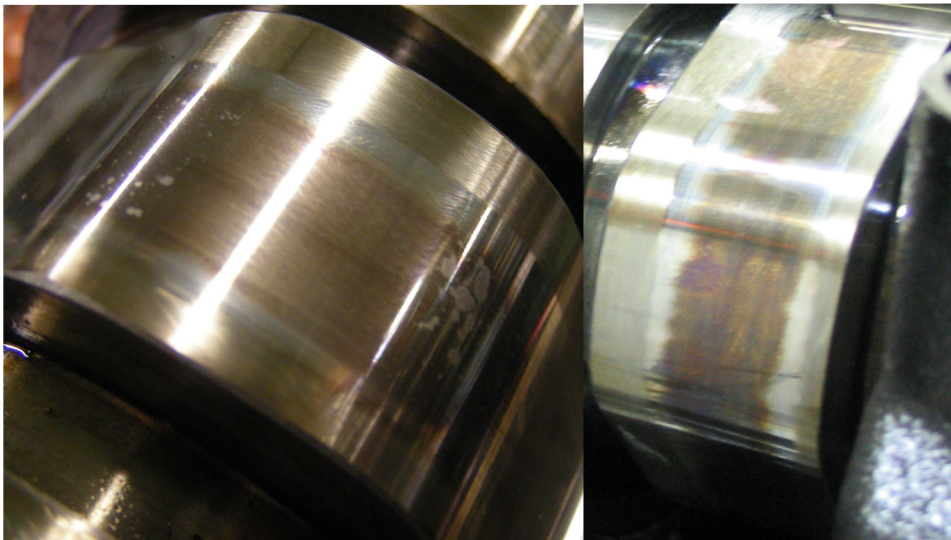
**4**



W2006614

Acceptable Injection Lobe Wear  
(only change of coloration)

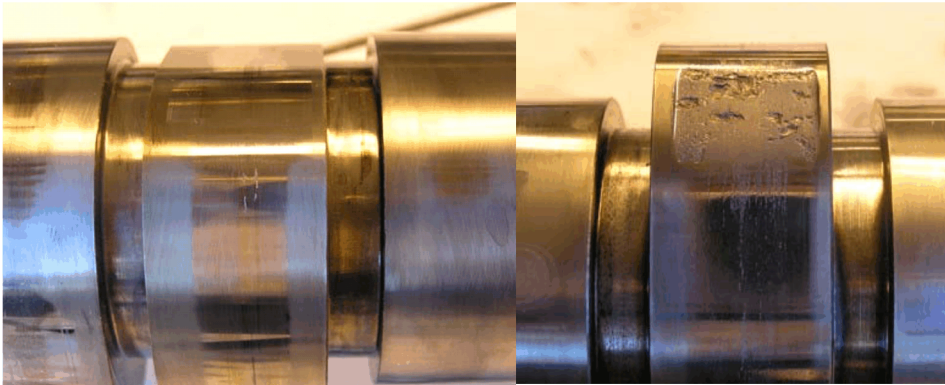
These figures shows examples of scoring that will **not** affect the running of the engine. Camshafts with this type of scoring do **not** need to be changed.



W2006616

Acceptable Inlet/Exhaust/Brake Lobe Wear  
(only change of coloration)

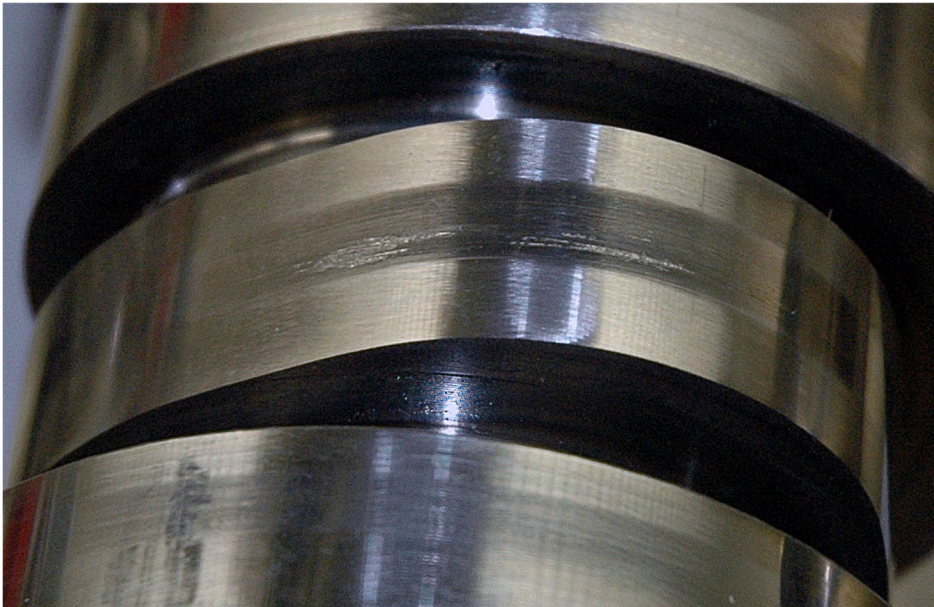
**5**



W2006615

Unacceptable Injection Lobe Wear  
(several millimeters of damage which can be  
felt with fingernail)

These figures show examples of a camshaft with material damage. The camshaft should **not** be reused. Replace the rocker arms that roll on the damaged cam lobes when the camshaft is replaced.



W2006617

Unacceptable Inlet/Exhaust/Brake Lobe Wear  
(several millimeters of damage which can be  
felt with fingernail)

**6**

Install the valve cover. Refer to Group 21 for service procedures.