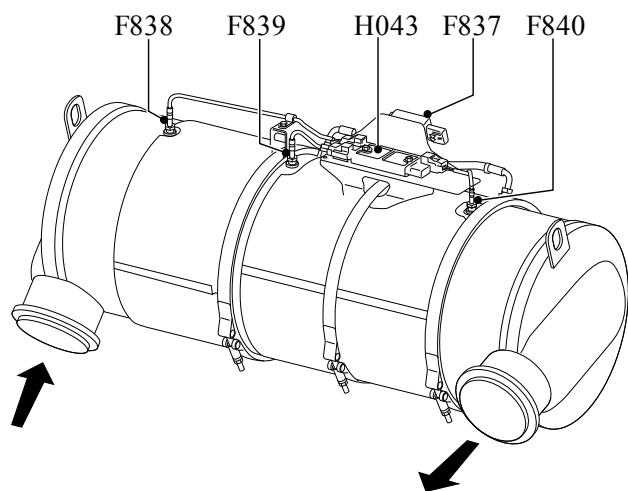


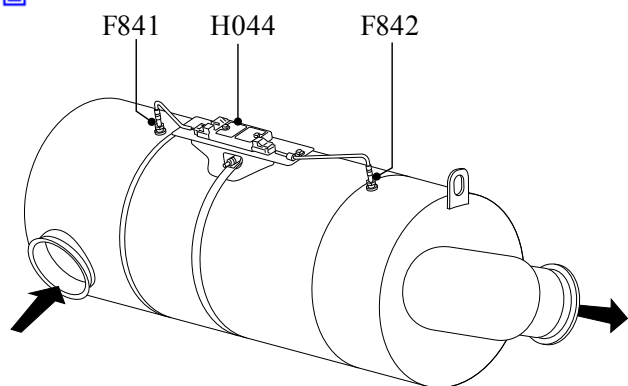
Location information, EAS-3

The drawings are only illustrative. The location of the components depends on the configuration and type of vehicle.

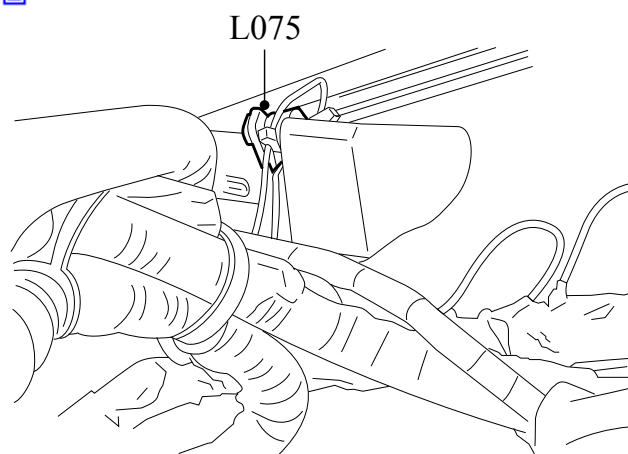
Refer to the OEM service manual for the exact location of the after treatment system components.



i401637

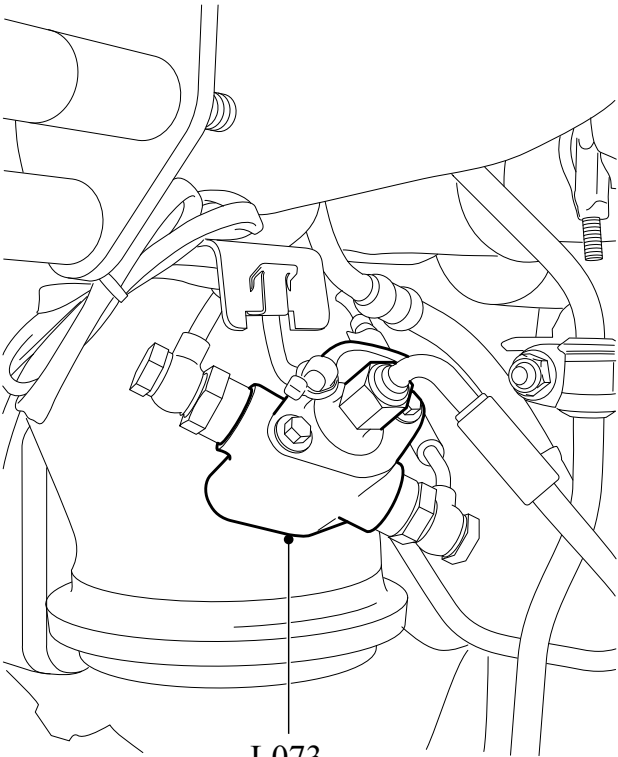


i401638

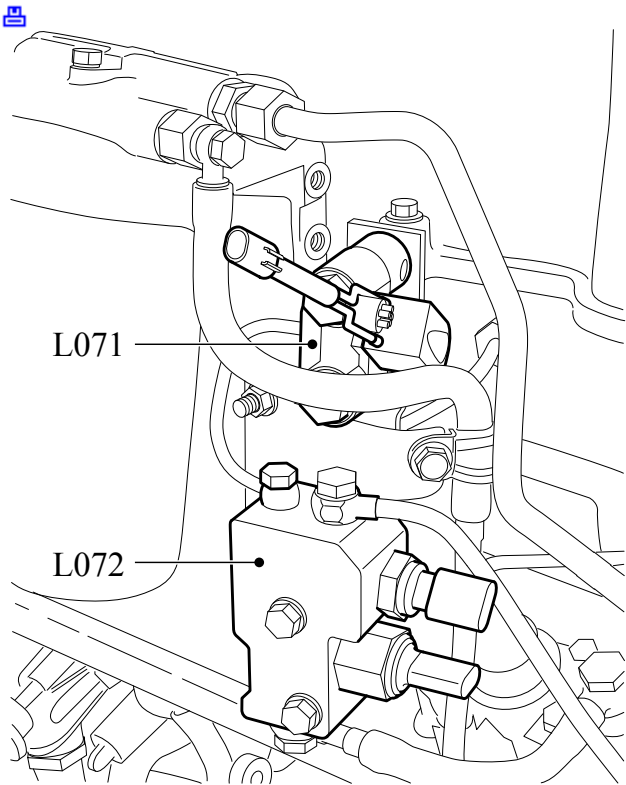


i401685

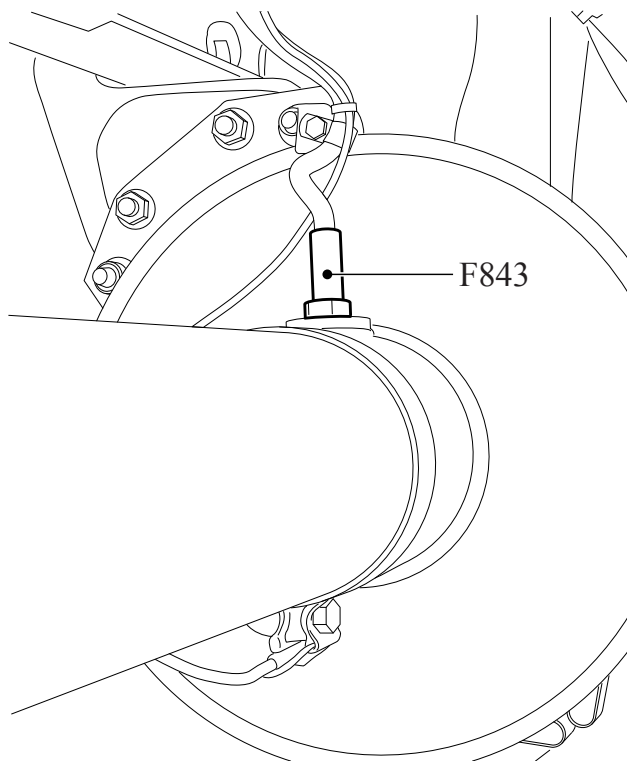




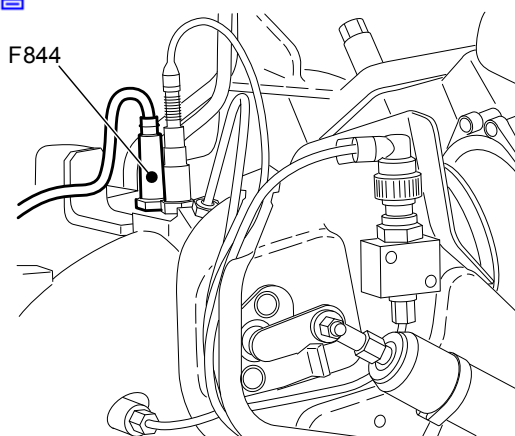
i401686



i401687



i401688



i401733



M027020 - 02/23/2010 13:52:44

This information applies exclusively to the entered chassis number or the selected engine type. Please take into account that this information may change daily. Therefore the provided information is only valid on 12-12-2015. You cannot derive any rights from the information provided with respect to vehicles and/or components of another series, with another chassis number, and/or of another date. (/)