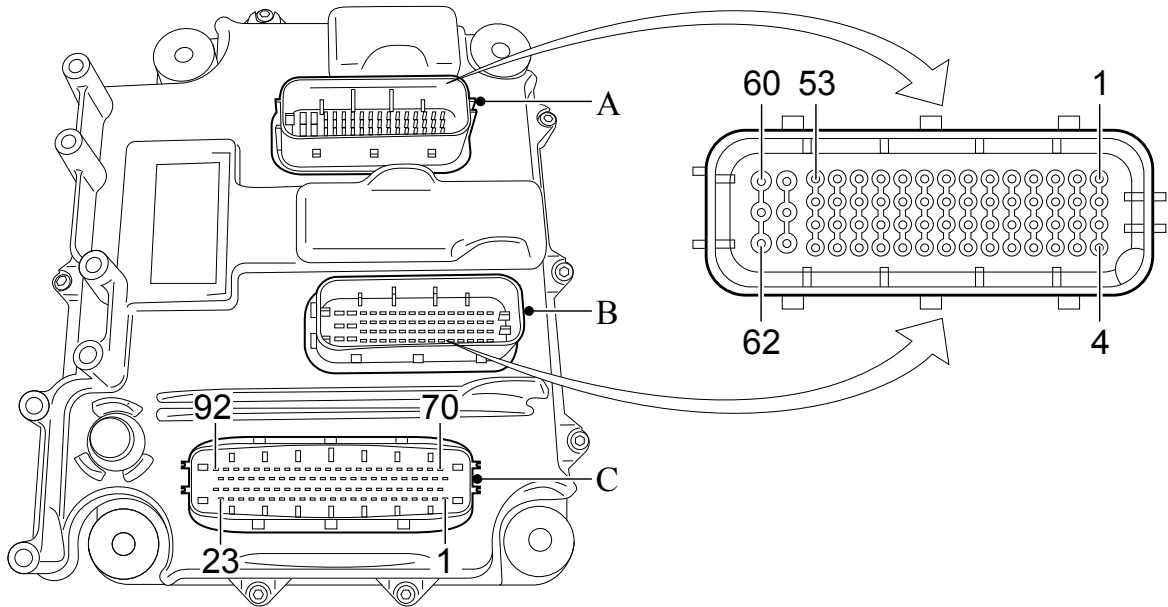


Sensor, EGR pressure difference (F751)



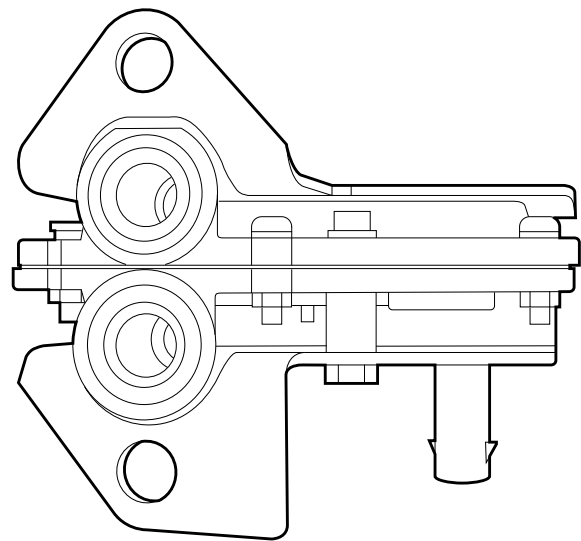
I401565



A	Electronic unit connection point				
B	Description of connection point				
C	Reading at connection point (Vbat = battery voltage)				
D	Measuring unit				
E	Explanatory notes (if applicable)				
F	'X' indicates that additional information is available in 'Technical data.'				
A	B	C	D	E	F
C35	Ground, EGR differential pressure sensor (F751)	0	VDC		
C58	Supply voltage, EGR differential pressure sensor (F751)	5	VDC	Open voltage, with detached connector	
C80	Input signal, EGR differential pressure sensor (F751)		VDC		X

Model

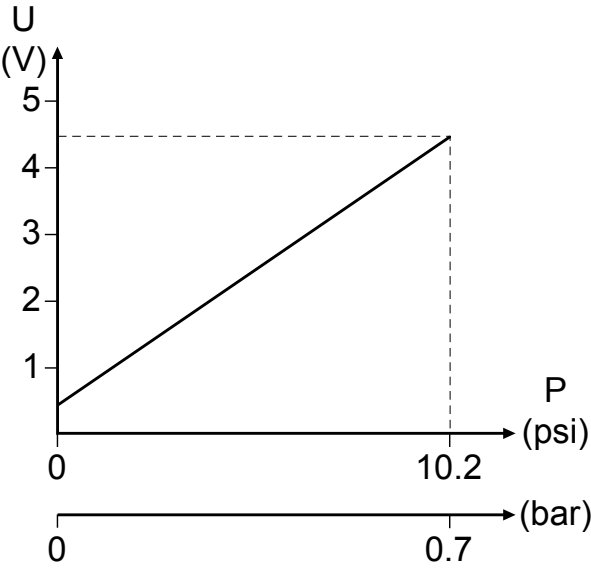
Differential pressure transducer



i401263



Differential pressure sensor voltage signal



i401198-2



M026732 - 02.22.2010

This information applies exclusively to the entered chassis number or the selected engine type. Please take into account that this information may change daily. Therefore the provided information is only valid on 12-13-2015. You cannot derive any rights from the information provided with respect to vehicles and/or components of another series, with another chassis number, and/or of another date. (/)