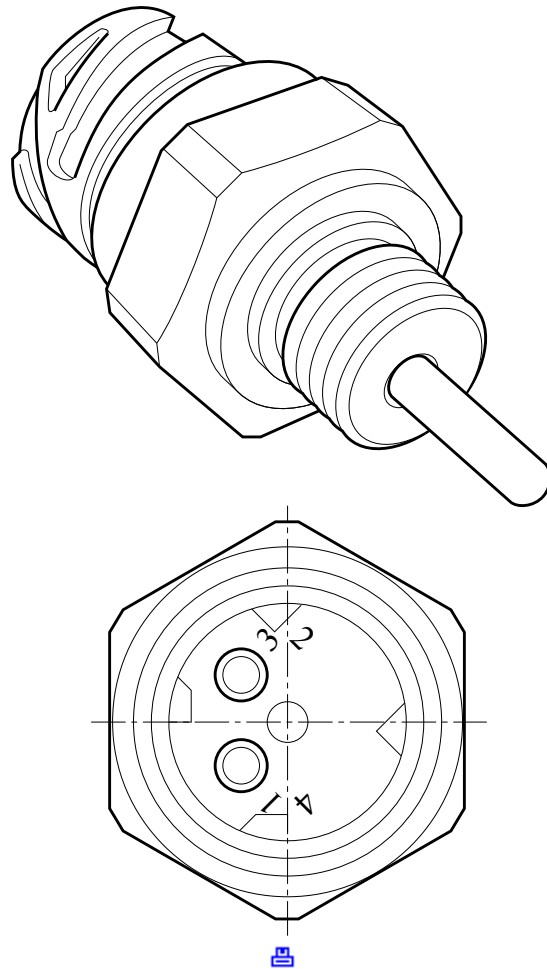


## Sensor, fuel temperature (F803)

The fuel temperature sensor measures the fuel temperature in the fuel gallery. The sensor is located in the middle of the fuel gallery between the cylinder 3 pump unit and the cylinder 4 pump unit. In this way, the measured values for fuel temperature best represent the whole fuel gallery.

It is a Negative Temperature Coefficient (NTC) fuel temperature sensor. The higher the temperature, the lower the resistance.



### Effect of temperature signal on the system:

- Correction of quantity of fuel to be injected
- Limitation of the maximum engine speed when the temperature is too high or too low

M026774 - 02.22.2010

This information applies exclusively to the entered chassis number or the selected engine type. Please take into account that this information may change daily. Therefore the provided information is only valid on 12-12-2015. You cannot derive any rights from the information provided with respect to vehicles and/or components of another series, with another chassis number, and/or of another date. ( / )