

Sensor, Position BPV (F811)

The BPV position sensor (F811) measures the position of the cylinder and therefore the position of the back pressure valve (BPV).

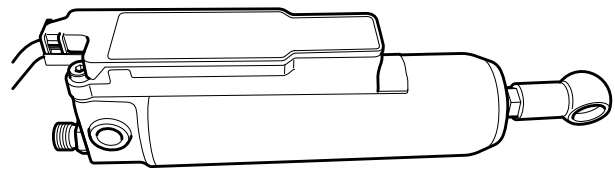
The sensor used is a permanent magnetic linear contactless displacement (PLCD) sensor.

The PLCD sensor operates on a magnetic-inductive principle.

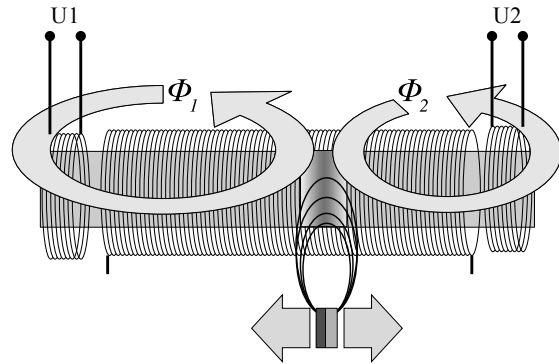
The PLCD sensor consists of a special soft magnetic core surrounded by one primary and two secondary coils. An external permanent magnet guide close to the sensor causes localized magnetic saturation and thereby virtual division of the core. The position of the saturation zone along the sensor axis can be determined by a coil system.

Effect of output signal on the system:

- Closed loop control of the BPV



i401664



i401759

M026787 - 09.14.2010

This information applies exclusively to the entered chassis number or the selected engine type. Please take into account that this information may change daily. Therefore the provided information is only valid on 12-12-2015. You cannot derive any rights from the information provided with respect to vehicles and/or components of another series, with another chassis number, and/or of another date. (/)