

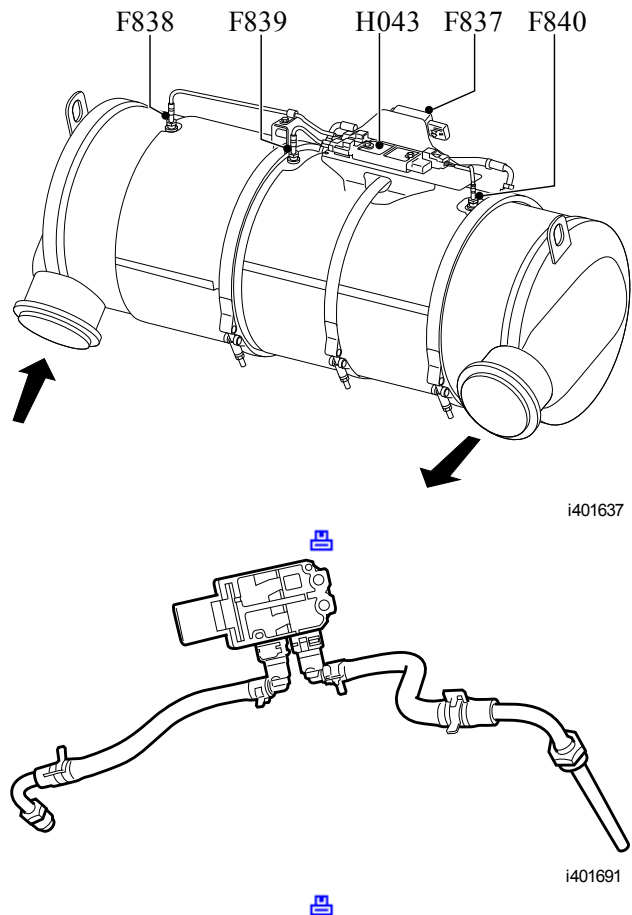
Sensor, DPF pressure (F837)

The DPF pressure sensor (F837) is a piezo-capacitive sensor. The higher the pressure, the higher the voltage signal.

This sensor measures the pressure in the exhaust before and after the DPF.

The sensor has two output signals:

- The differential pressure of the measured pressure before and after the DPF.
- The measured pressure after the DPF.



Effect of the output signal on the system:

- Determination of the soot load of the DPF
- Calculation of the amount of fuel that must be injected
- Calculation of the duration of the regeneration

M027000 - 02.23.2010

This information applies exclusively to the entered chassis number or the selected engine type. Please take into account that this information may change daily. Therefore the provided information is only valid on 12-15-2015. You cannot derive any rights from the information provided with respect to vehicles and/or components of another series, with another chassis number, and/or of another date. (/)