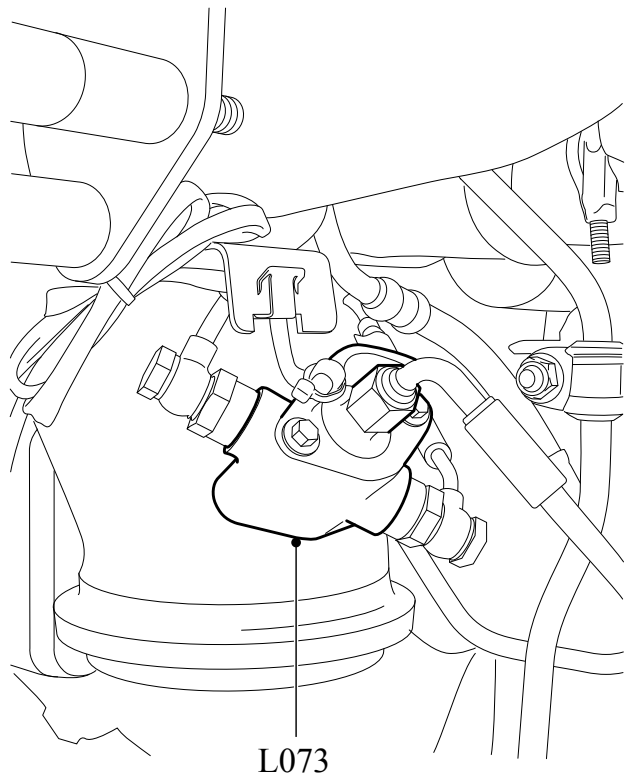


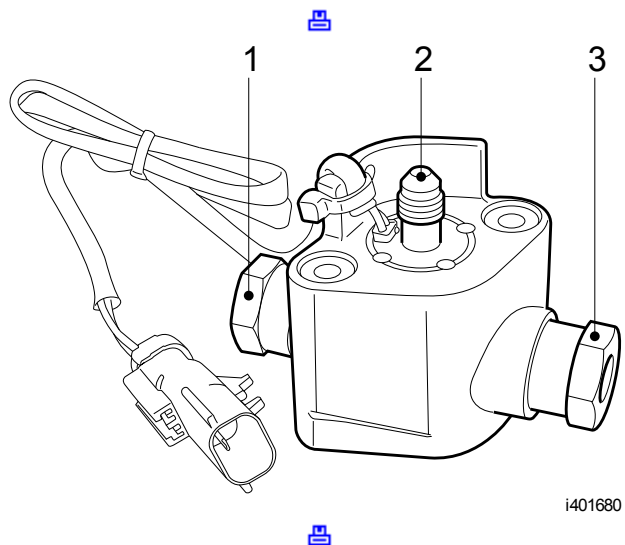
Dosing module, fuel (L073)

The fuel-dosing module (L073) is mounted after the Back Pressure Valve. During regeneration, the fuel-dosing module injects fuel into the exhaust pipe before the Diesel Oxidation Catalyst. This is to raise the temperature of the exhaust gas after the Diesel Oxidation Catalyst to the temperature at which the soot is 'burned' in the DPF by the oxygen in the exhaust gases. The fuel-dosing module is activated with a duty cycle so the amount of injected fuel can be regulated to keep the DPF at the correct temperature. The fuel is supplied at connection (2).

When the engine is running, engine coolant enters the fuel-dosing module at connection (3). The coolant flows through the fuel-dosing module and cools it; it leaves the fuel-dosing module at connection (1). From here, it flows back to the engine.



i401686



i401680

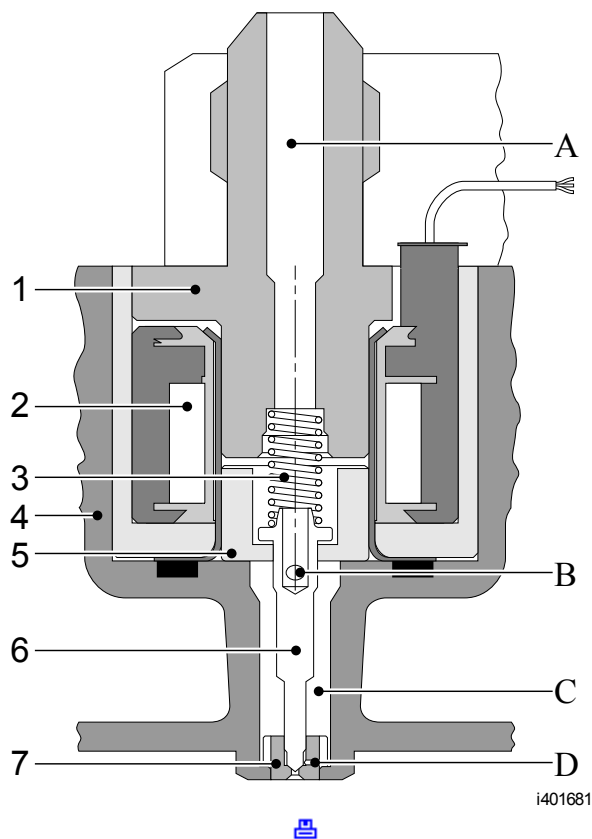
This description is to explain the operation principle. The fuel-dosing module actually mounted on the vehicle may differ from this description.

Fuel from the fuel intake module enters the fuel-dosing module via bore (A). The needle (6) is partly hollow and fuel enters the chamber (C) via bore (B).

The injector needle (6) is pressed onto the needle seat (7) by the retainer spring (3). When the electronic control unit energizes the coil (2) of the dosing module, the armature (5) will be lifted against the retainer spring pressure (3). As a result, the needle (6) is lifted and the fuel from chamber (C), which flows via bore (D), will be injected.

The amount of injected fuel depends on the fuel

pressure and the duty cycle activation of the fuel-dosing module.



- 1 Stator
- 2 Coil
- 3 Retainer spring
- 4 Housing
- 5 Armature
- 6 Needle
- 7 Needle seat

M027008 - 11.12.2012

This information applies exclusively to the entered chassis number or the selected engine type. Please take into account that this information may change daily. Therefore the provided information is only valid on 12-16-2015. You cannot derive any rights from the information provided with respect to vehicles and/or components of another series, with another chassis number, and/or of another date. (/)