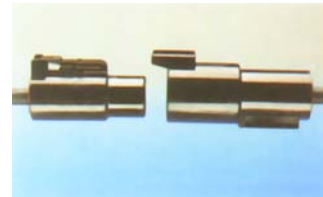
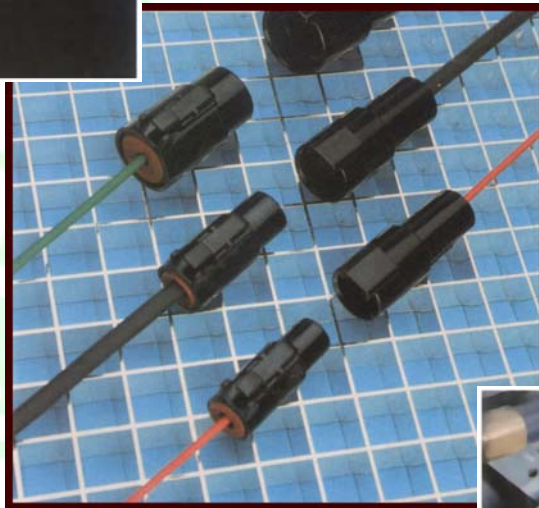
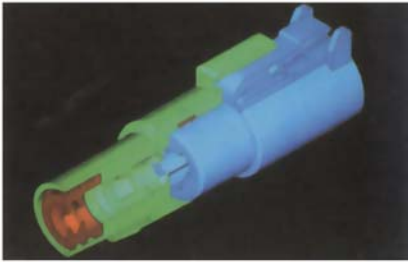


# DEUTSCH

## Industrial Products Division

Deutsch I.P.D. developed the DTHD-Series Power Plugs for those applications requiring a complete, environmentally sealed, single power circuit termination. The plug features an integral coupling latch that provides tactile and audible feedback during coupling. The rugged thermoplastic receptacle is designed as an inline for cable to cable applications and is supplied with an integral Vee-Groove to accept mounting clips, brackets and flanges. Crimp-type solid contact sizes 4, 8 and 12 accept wire sizes AWG 6, AWG 8, AWG 10, AWG 12 and 14 respectively.

For those heavy-duty rated circuits requiring power, specify the Deutsch I.P.D. Power Plug Series.



**DTHD POWER PLUGS**

**Product Data Sheet**

**DEUTSCH**  
**CONNECTORS**  
A Step Ahead 

# DTHD – POWER PLUGS

## DTHD ENVELOPE DATA

(See Contact Specification for part number selection.)

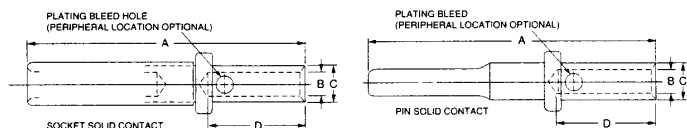


Part No.	Size	A	B	Ø
DTHDO* - 1 - 4*	4	1.498	2.068	.875
DTHDO* - 1 - 8*	8	1.498	2.068	.660
DTHDO* - 1 - 12*	12	1.498	2.068	.570

-E003 End Cap Modification

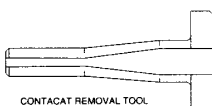
DTHD plugs and receptacles are permanently assembled with thermoplastic end caps that prevent removal of the silicone wire seal grommets. Designed for diesel engine, electronic fuel injectors, automatic transmissions, ABS brakes and other applications that involve fuel and oil exposure. These end caps provide the additional reliability required for critical wiring circuits.

## CONTACT – SOLID – CRIMP TYPE



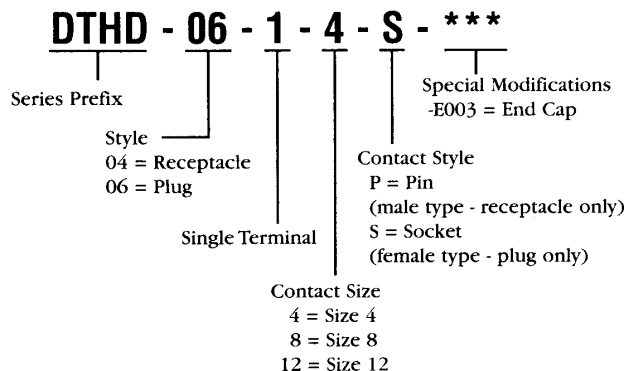
CONTACT PART NUMBER	SIZE & TYPE	A MAX	B MIN	C MAX	D MIN	WIRE GAUGE RANGE	RECOMMENDED STRIP LENGTH	HAND CRIMP TOOL	PRODUCTION CRIMP TOOL
0460-204-0490	4 PIN	1.045	.229	.350	.420	6 AWG (13.0 mm <sup>2</sup> )	.430 - .492 (10.92 - 12.50 mm)	HDT-04-08	
0462-203-04141	4 SOC	.995	.229	.350	.420	6 AWG (13.0 mm <sup>2</sup> )	.430 - .492 (10.92 - 12.50 mm)		
0460-204-08141	8 PIN	1.045	.178	.271	.420	8-10 AWG (8.0 - 5.0 mm <sup>2</sup> )	.430 - .492 (10.92 - 12.50 mm)	HDT-04-08	
0462-203-08141	8 SOC	.995	.178	.271	.420	8-10 AWG (8.0 - 5.0 mm <sup>2</sup> )	.430 - .492 (10.92 - 12.50 mm)		
0460-204-12141	12 PIN	0.827	0.103	0.162	0.220	12-14 AWG (3.0 - 2.0 mm <sup>2</sup> )	.222 - .284 (5.64 - 7.21 mm)	HDT-48-00	HD12-P/S
0462-203-12141	12 SOC	0.775	0.103	0.162	0.220	12-14 AWG (3.0 - 2.0 mm <sup>2</sup> )	.222 - .284 (5.64 - 7.21 mm)		

PART NUMBER	SIZE & TYPE	WIRE RANGE
114009	4	6
114008	8	8 - 10
114010	12	12-14



## Ordering Information

## DTHD PART NUMBERING SYSTEM



## PERFORMANCE SPECIFICATIONS

### DIELECTRIC WITHSTANDING VOLTAGE

Current leakage less than 2 milliamps at 1500 VAC.

### CRIMP TENSILE STRENGTH

#4	Size	Contacts	300 lbs.
#8	Size	Contacts	90 lbs.
#12	Size	Contacts	70 lbs.

### TEMPERATURE

Operating at temperatures from -55°C to +125°C.

### DURABILITY

No electrical or mechanical defects after 100 cycles of engagement and disengagement.

### PHYSICAL SHOCK

No unlocking, unmating or other unsatisfactory result during or after 50 g's in each of three mutually perpendicular planes. No electrical discontinuities longer than 1 microsecond. MIL-STD 202, Method 213, Condition "C".

### CONTACT CURRENT RATING

Contact Size	Maximum Continuous Current @ Rated Temp.
#4	100 amps
#8	60 amps
#12	25 amps

### VIBRATION

Maintains continuity and exhibits no mechanical or physical damage during or while subject to a sinusoidal vibration, having an amplitude of .060 in D.A. and the frequency varied linearly between limits of 10 to 2000 to 10 Hz with a maximum force of 20 g's in a period of 1.0 minute. No electrical discontinuities longer than 1 microsecond.

### INSULATION RESISTANCE

1000 megohms min. at 25°C.

### MOISTURE RESISTANCE

Water does not penetrate seals when submerged in 3 feet of water.

### CORROSION RESISTANCE

Connectors show no evidence of corrosion after exposure to 48 hours of salt spray per MIL-STD 1344 method 1001.

### FLUID RESISTANCE

Connectors show no damage when exposed to most fluids used in industrial applications.

### NORMAL WIRE SEALS

No. 4 contacts - receive conductor AWG 6. Rear insert will seal on smooth insulation from .280" to .292" O.D.

No. 8 contacts - receive conductor AWG 8 thru 10. Rear insert will seal on smooth insulation from .190" to .240" O.D.

No. 12 contacts - receive conductor AWG 12 thru 14. Rear insert will seal on smooth insulation from .134" to .170" O.D.



**DEUTSCH**  
INDUSTRIAL PRODUCTS DIVISION  
3850 Industrial Avenue, Hemet, California 92343  
Telephone (909) 765-2250 • Fax (909) 765-2255