



Spare Parts Catalog

RL 85 A

NOVABUS

Material number: 4474.085.199

ZF Friedrichshafen AG

Hauptverwaltung

80038 Friedrichshafen

Deutschland

Telefon: +49 7541 77-0

Telefax: +49 7541 77-908000

www.zf.com

zuständiges Werk:

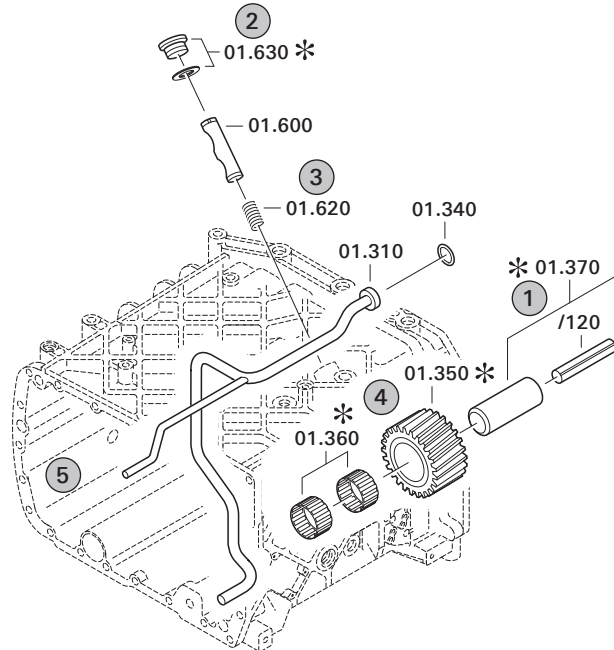
Passau

Notes relating to the spare parts catalog

Setup of the spare parts catalog

- Cover sheet
- Technical Cover (only in SDM print)
- Overview of figures
- Figure
- Associated parts list
- Next figure
- Associated parts list
- ...

Figure and parts list



Overview of figures

Bildtafel Figure	Sachnummer Product number	Benennung (Description)	Technische Info Technical info	Description (Benennung)	Menge Quantity	Einheit Unit
068.08.17	1316.170.001	AUSLEGER	WL	SHIFT TURRET	1	Stk
068.08.06	1316.170.031	DECKEL	WL*H-H*VM	COVER	1	Stk
068.08.14	1316.170.808	DECKEL	WL*AUSL+GEH*H-H*HF160N	COVER	1	Stk
08	1316.170.441	ANSCHLUSSTEILE	WL*NG-VORB*RG-SCHL*168N*BAJONETT	CONNECTING PARTS	1	Stk

The "gap" indicates that there is no separate graphics panel (poster) for this assembly
The parts of this assembly are shown with the same mid-section number on the figure

1 Positions and subpositions

Pos.	Sachnummer Product number	Benennung (Description)	Technische Info Technical info	Description (Benennung)	Menge Quantity	Einheit Unit
0370	1315.201.054	RUECKLAUFBOLZEN	KPL.16S151*SG*L= 79	REV.IDLER SHAFT	1	Stk
/0120	0631.329.293	SPANNSTIFT		SLOT. PIN	1	Stk

Positions marked with "/" are the individual items of a completion
For example: Position 0370 contains a centering pin with the position /0120

2 Combinations with standardized parts

Pos.	Sachnummer Product number	Benennung (Description)	Technische Info Technical info	Description (Benennung)	Menge Quantity	Einheit Unit
0630		VERSCHL.SCHR.		SCREW PLUG	1	Stk
	0636.302.067	VERSCHL.SCHR.		SCREW PLUG	1	Stk
	0634.801.249	DICHTRING	A 26 X 31	SEALING RING	1	Stk

The parts list shows the components included in the combination of standardized parts

3 Depiction of position/item number on the figure and in the parts list

01.620 - on the figure 01 relates to the assembly in which the position is included. Due to program-related reasons, it is shown on the figure.

0620 - in the parts list

Pos.	Sachnummer Product number	Benennung (Description)	Technische Info Technical info	Description (Benennung)	Menge Quantity	Einheit Unit
0620	0732.040.736	DRUCKFEDER		COMPRESSION SPRING	1	Stk

4 *-Positions

Positions marked with an * are optional i.e. inclusion in the parts list is not mandatory.
The following note is shown on the figure

je nach Stücklistenausführung
depending on spec. number
*
suivant la nomenclature
secondo la distinta base

5 Parts, dotted display

Parts with dotted display on the figure are only used for orientation of other parts

Assembly group overview

Material number: 4474.085.199

RL 85 A / NOVABUS

Page 1 from 1



Graphics	Pos.	Material number	Name	Quantity	Amend. no.	Techn. Info.
447411301400	60	4474.113.014	OUTPUT	1		
447411344600	70	4474.113.446	OUTPUT	1		
447410118900	80	4474.101.189	AXLE CASING	1		
447411408300	46	4474.114.083	JOINT HOUSING	1		
447411408400	50	4474.114.084	JOINT HOUSING	1		
446212294401	10	4462.122.944	BRAKE	1		
446212294501	20	4462.122.945	BRAKE	1		

Plant

Page 1 from 1

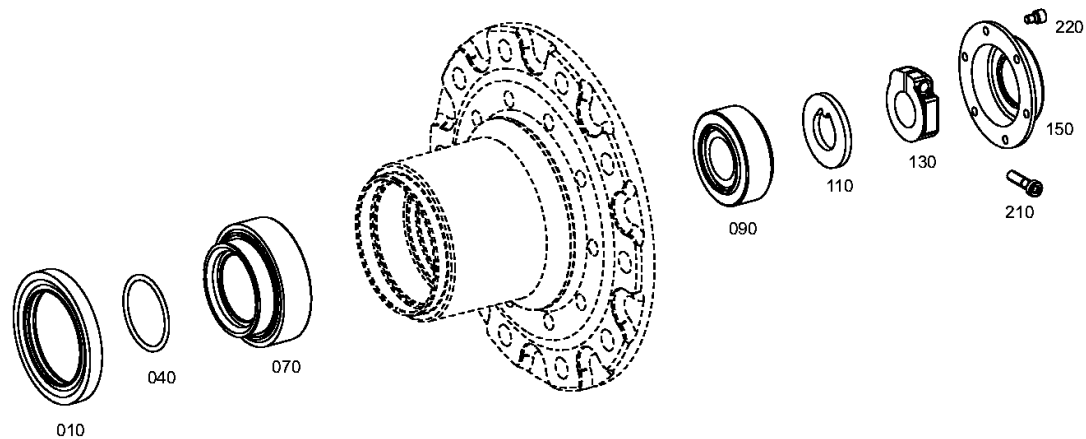
Material number: 4474.085.199

Plant: 447411301400

Material-assembly-group-no: 4474.113.014

RL 85 A / NOVABUS

OUTPUT



Parts list

Page 1 from 1

Material number: 4474.085.199

RL 85 A / NOVABUS

Plant: 447411301400

Material-assembly-group-no: 4474.113.014



Pos.	Material number	Customer material	Name	Quantity	ME	Amend. no.	Techn. Info.	Weight	Rep kit	Alternative material
10	0750.111.402		SHAFT SEAL	1			100X140XX15 A/BSW	156,500		
40	0634.303.844		O-RING	1			70X7	21		
70	0750.117.516		TAROLLBEARING	1			69,995X130,000X57,000	2,900		
90	0750.117.524		TAROLLBEARING	1			45,000X100,000X38,250	1,370		
110	4474.385.056		SUPPORT SHIM	1				185		
130	4474.385.057		LOCKING NUT	1				360		
150	4474.385.106		COVER	1		K01994/0010		840		
210	0636.102.066		CAP SCREW	1			M10X40	0,030		
220	0636.101.024		CAP SCREW	6			M8X12	0,010		

Plant

Page 1 from 1

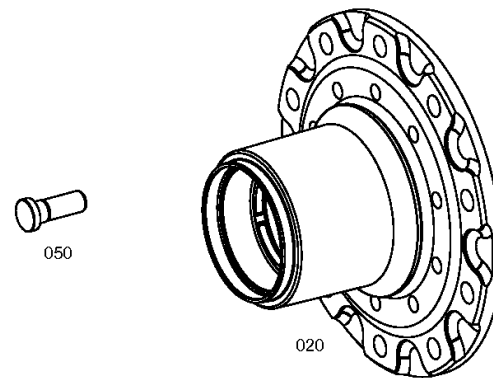
Material number: 4474.085.199

Plant: 447411344600

Material-assembly-group-no: 4474.113.446

RL 85 A / NOVABUS

OUTPUT



Parts list

Page 1 from 1

Material number: 4474.085.199

RL 85 A / NOVABUS

Plant: 447411344600

Material-assembly-group-no: 4474.113.446



Pos.	Material number	Customer material	Name	Quantity	ME	Amend. no.	Techn. Info.	Weight	Rep kit	Alternative material
20	4474.385.118		HUB	1		K00115/0510	D-Teil	31,660		
50	0736.617.031		WHEEL BOLT	10				224		

Plant

Page 1 from 1

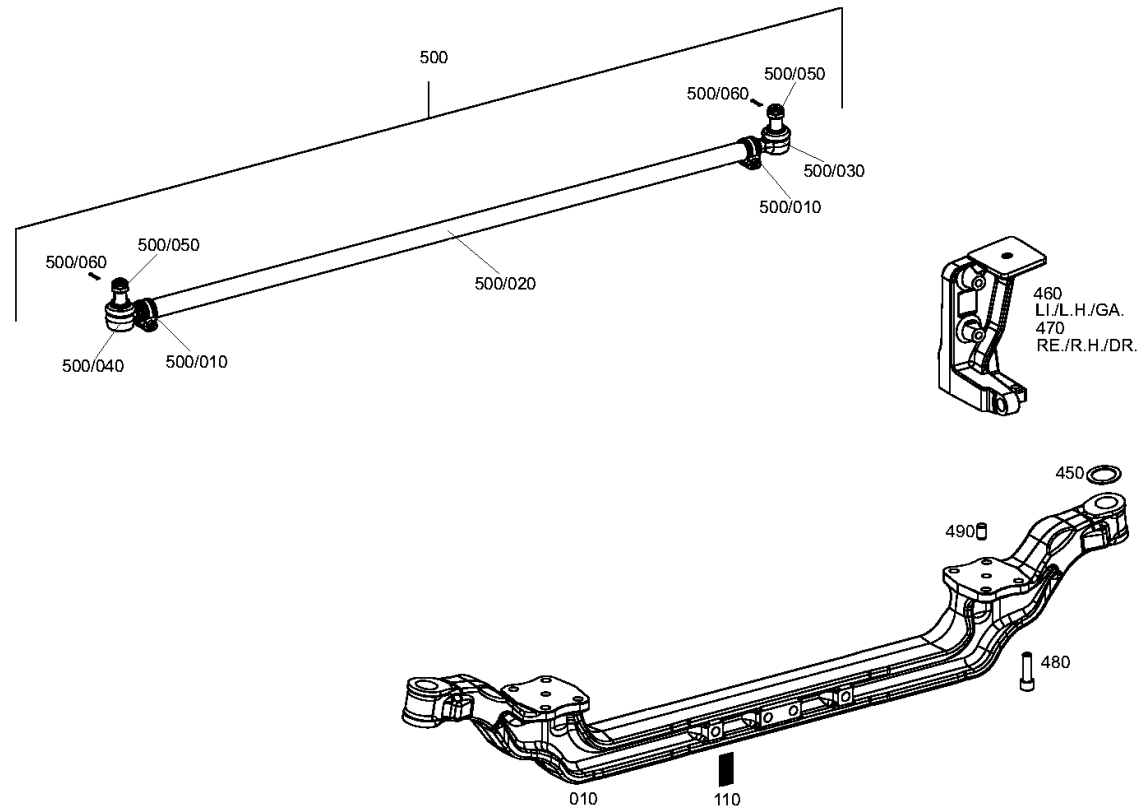
Material number: 4474.085.199

Plant: 447410118900

Material-assembly-group-no: 4474.101.189

RL 85 A / NOVABUS

AXLE CASING



Parts list

Page 1 from 3

Material number: 4474.085.199

RL 85 A / NOVABUS

Plant: 447410118900

Material-assembly-group-no: 4474.101.189



Pos.	Material number	Customer material	Name	Quantity	ME	Amend. no.	Techn. Info.	Weight	Rep kit	Alternative material
10	4474.385.037		AXLE CASING	1				195		
110	0730.365.127		TYPE PLATE	1			ZF-Standard/Passau	0,005		
450	---		WASHER	2				0,000		
---	0730.105.918		WASHER	2			S=2,45	50		
---	0730.105.919		WASHER	2			S=2,55	43,400		
---	0730.105.920		WASHER	2			S=2,65	55		
---	0730.105.921		WASHER	2			S=2,3	45		
---	0730.105.922		WASHER	2			S=2,4	0,050		
---	0730.105.923		WASHER	2			S=2,5	15		
---	0730.105.924		WASHER	2			S=2,6	55		
---	0730.105.925		WASHER	2			A=2,70	55		
---	0730.105.926		WASHER	2			S=2,8	0,057		
---	0730.105.927		WASHER	2			S=2,9	0,059		
---	0730.105.928		WASHER	2			S=3,0	6		
---	0730.111.639		WASHER	2			A=2,2	45		
---	0730.111.640		WASHER	2			A=2,25	45		

Parts list

Page 2 from 3

Material number: 4474.085.199

RL 85 A / NOVABUS

Plant: 447410118900

Material-assembly-group-no: 4474.101.189



Pos.	Material number	Customer material	Name	Quantity	ME	Amend. no.	Techn. Info.	Weight	Rep kit	Alternative material
---	0730.111.641		WASHER	2			A=2,35	47		
---	0730.111.642		WASHER	2			A=2,75	55		
---	0730.111.643		WASHER	2			A=2,85	60		
---	0730.111.644		WASHER	2			A=2,95	60		
---	0730.109.498		WASHER	2			S=1,8	0,036		
---	0730.300.382		WASHER	2			A=1,85	0,039		
---	0730.300.388		WASHER	2			A=2,15	0,045		
---	0730.300.383		WASHER	2			A=1,90	0,040		
---	0730.300.384		WASHER	2			A=1,95	0,041		
---	0730.300.385		WASHER	2			A=2,00	0,042		
---	0730.300.386		WASHER	2			A=2,05	0,041		
---	0730.300.387		WASHER	2			A=2,10	0,044		
460	4474.385.137		SPRING CARRIER	1				28,500		
470	4474.385.138		SPRING CARRIER	1				28,500		
480	0636.115.146		CAP SCREW	8			M20X1,5X55	200		
490	0631.302.112		CYLINDRICAL PIN	2			20X32	85		

Parts list

Page 3 from 3

Material number: 4474.085.199

RL 85 A / NOVABUS

Plant: 447410118900

Material-assembly-group-no: 4474.101.189



Pos.	Material number	Customer material	Name	Quantity	ME	Amend. no.	Techn. Info.	Weight	Rep kit	Alternative material
500	0501.007.608		TIE ROD	1				11		
/10	0501.208.615		CLAMP	2				0,250		
//10	0501.321.099		HEXAGON BOLT	1				0,195		
//20	0637.012.500		HEXAGON NUT	1			M12X1,5	0,000		
/20	0501.321.097		PIPE	1				8,480		
/30	0501.211.834		BALL JOINT	1				1,600		
/40	0501.211.835		BALL JOINT	1				1,574		
/50	0637.009.502		CASTLE NUT	2			M24X1,5	70		
/60	0631.701.047		SPLIT PIN	2			5X40	6,300		

Plant

Page 1 from 1

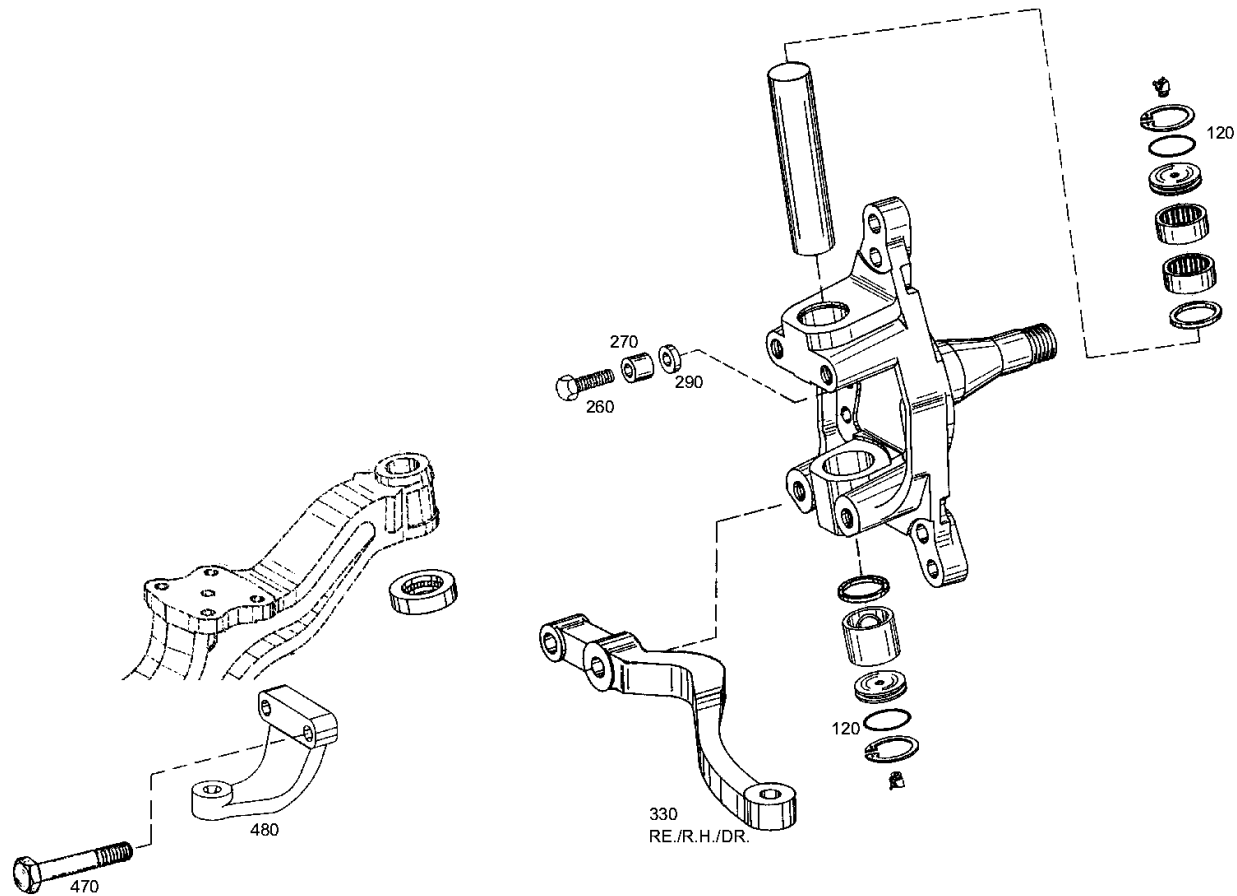
Material number: 4474.085.199

Plant: 447411408300

Material-assembly-group-no: 4474.114.083

RL 85 A / NOVABUS

JOINT HOUSING



Parts list

Page 1 from 1

Material number: 4474.085.199

RL 85 A / NOVABUS

Plant: 447411408300

Material-assembly-group-no: 4474.114.083

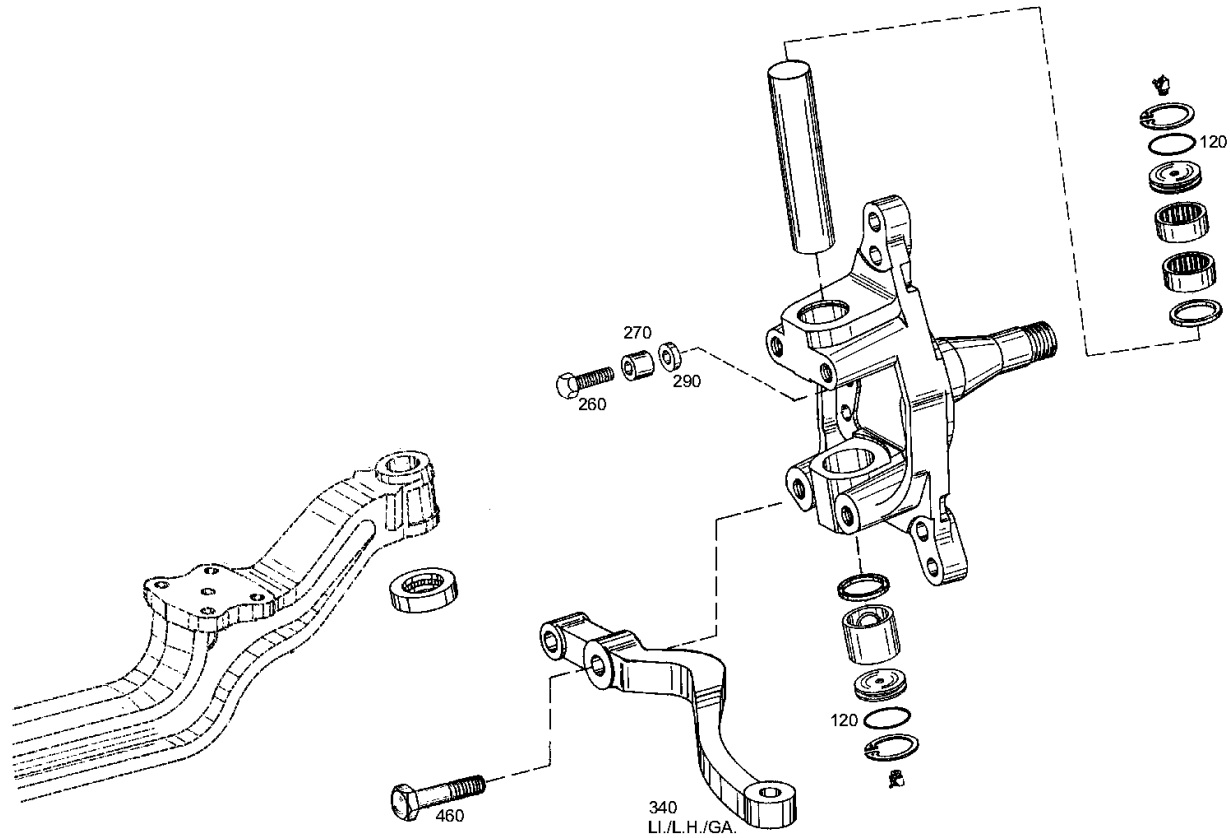


Pos.	Material number	Customer material	Name	Quantity	ME	Amend. no.	Techn. Info.	Weight	Rep kit	Alternative material
60	0735.301.286		AXROLLER BEAR	1		Z00014705810	50,000X80,100X25,100	0,455		
70	0734.300.171		SEALING RING	1		Z00014705810	50,000X58,000X4,000	5		
90	0730.260.702		BUSH	1				390		
96	0735.300.973		NEEDLE SLEEVE	1		Z00013387110	50,000X58,000X50,000	0,230		
100	4474.385.002		SEALING HOLDER	2				0,130		
120	0634.304.270		O-RING	2			53X3	1,600		
130	0630.502.063		RETAINING RING	2			58X2	10,400		
150	0632.604.008		LUBRICNIPPLE	2				10,700		
160	4474.385.019		PIVOT PIN	1				3,700		
190	4474.385.134		STEERING KNUCKLE	1			D-Teil	29,800		
260	0736.010.094		STOP SCREW	1			M18X60	0,180		
270	0730.161.040		STOP BUSH	1			A=28	0,096		
290	0730.162.457		STOP WASHER	1			A=12,0	65		
330	4474.385.041		TRACK LEVER	1				9,577		
470	0636.011.615		HEXAGON BOLT	2			M22X130	448		
480	4474.385.049		STEERING ARM	1			D-TEIL	6,548		

Page 1 from 1

Material-assembly-group-no: 4474.114.084

JOINT HOUSING



Parts list

Page 1 from 1

Material number: 4474.085.199

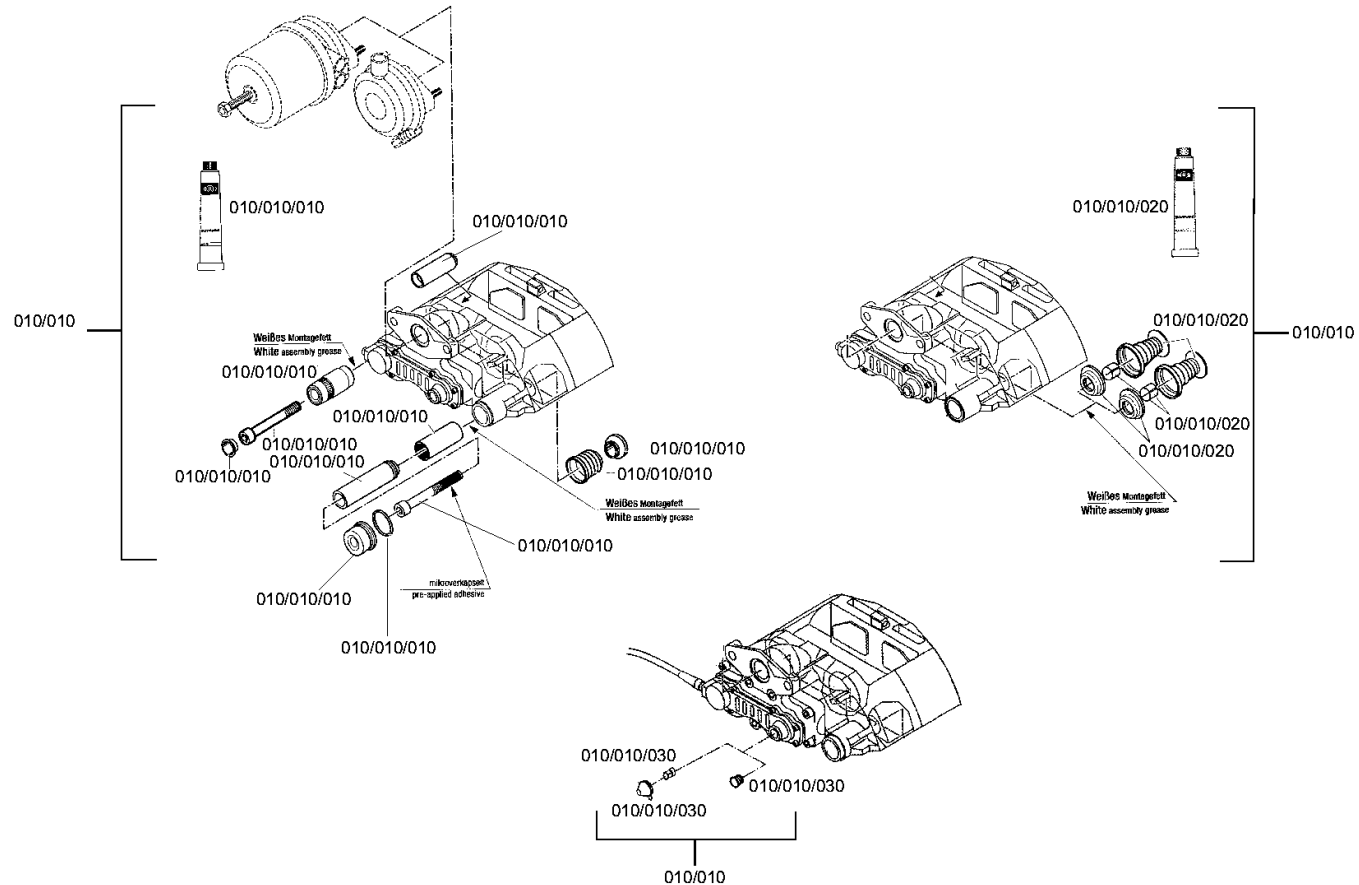
RL 85 A / NOVABUS

Plant: 447411408400

Material-assembly-group-no: 4474.114.084



Pos.	Material number	Customer material	Name	Quantity	ME	Amend. no.	Techn. Info.	Weight	Rep kit	Alternative material
60	0735.301.286		AXROLLER BEAR	1		Z00014705810	50,000X80,100X25,100	0,455		
70	0734.300.171		SEALING RING	1		Z00014705810	50,000X58,000X4,000	5		
90	0730.260.702		BUSH	1				390		
96	0735.300.973		NEEDLE SLEEVE	1		Z00013387110	50,000X58,000X50,000	0,230		
100	4474.385.002		SEALING HOLDER	2				0,130		
120	0634.304.270		O-RING	2			53X3	1,600		
130	0630.502.063		RETAINING RING	2			58X2	10,400		
150	0632.604.008		LUBRICNIPPLE	2				10,700		
160	4474.385.019		PIVOT PIN	1				3,700		
190	4474.385.134		STEERING KNUCKLE	1			D-Teil	29,800		
260	0736.010.094		STOP SCREW	1			M18X60	0,180		
270	0730.161.040		STOP BUSH	1			A=28	0,096		
290	0730.162.457		STOP WASHER	1			A=12,0	65		
340	4474.385.042		TRACK LEVER	1				10,160		
460	0636.011.558		HEXAGON BOLT	2			M22X90	0,335		



Plant

Page 2 from 3

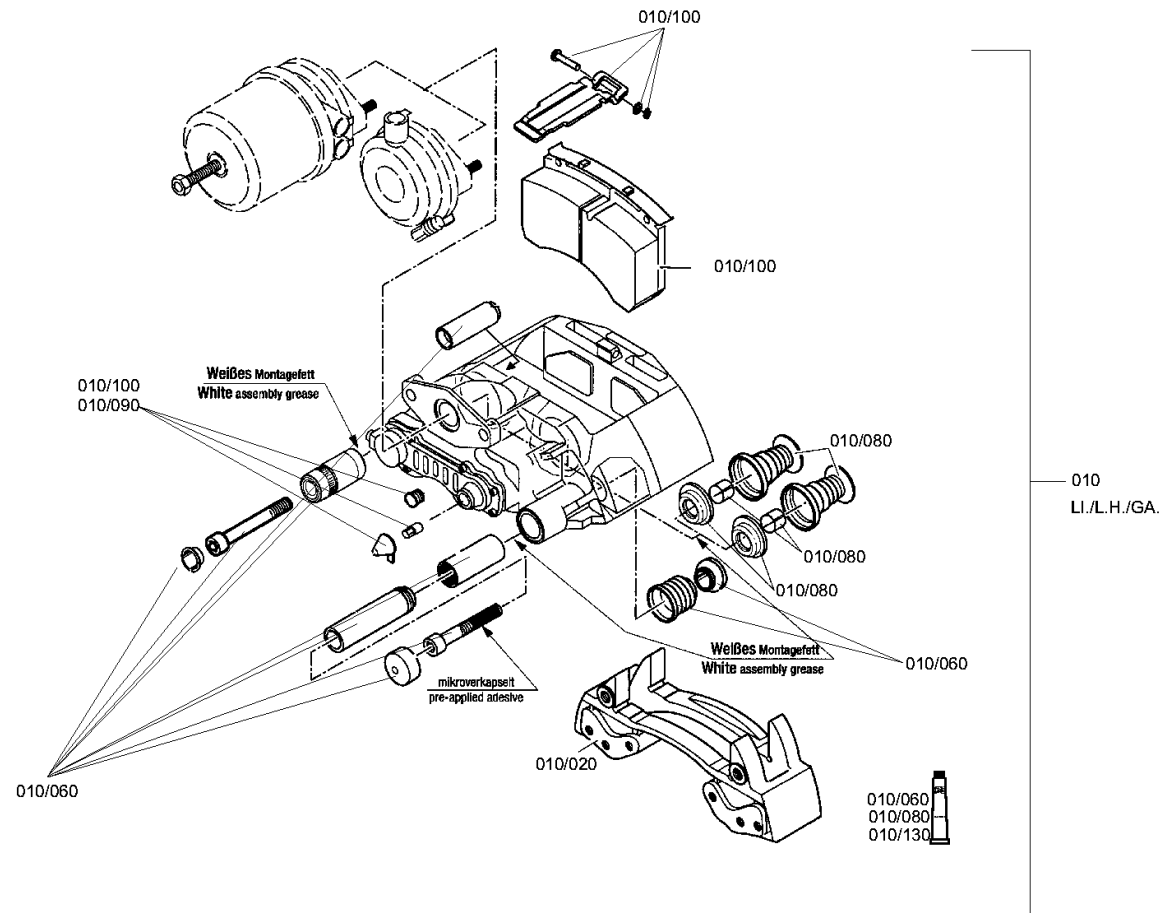
Material number: 4474.085.199

Plant: 446212294402

Material-assembly-group-no: 4462.122.944

RL 85 A / NOVABUS

BRAKE



Plant

Page 3 from 3

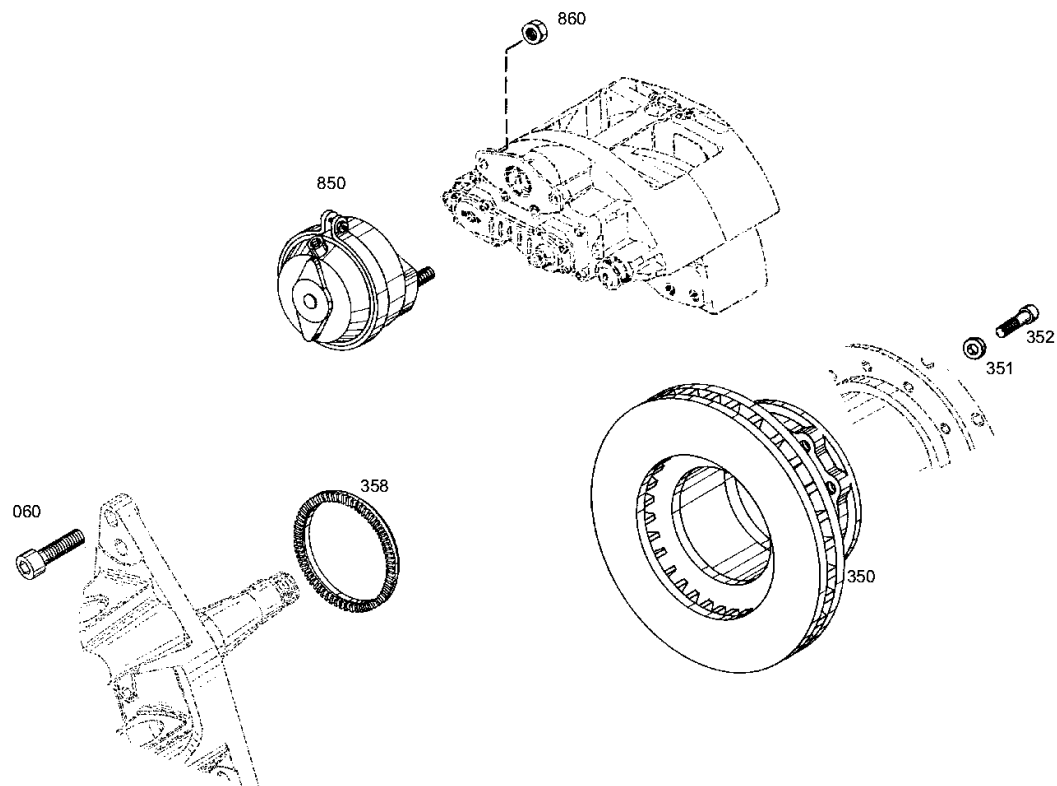
Material number: 4474.085.199

Plant: 446212294403

Material-assembly-group-no: 4462.122.944

RL 85 A / NOVABUS

BRAKE



Parts list

Page 1 from 1

Material number: 4474.085.199

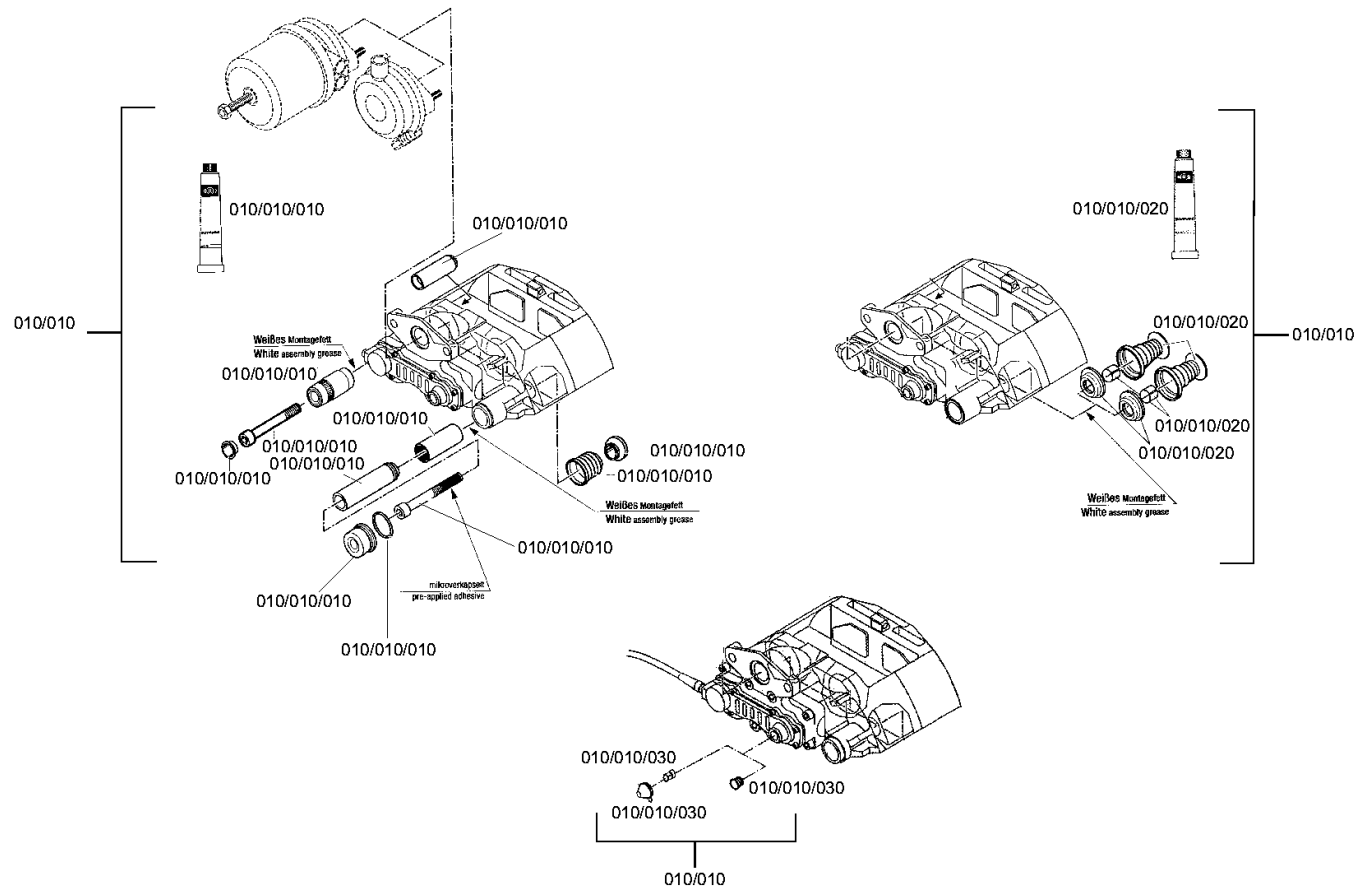
RL 85 A / NOVABUS

Plant: 446212294401

Material-assembly-group-no: 4462.122.944



Pos.	Material number	Customer material	Name	Quantity	ME	Amend. no.	Techn. Info.	Weight	Rep kit	Alternative material
10	0501.008.893		DISC BRAKE	1				41,500		
/10	0501.220.399		CALIPER	1				0,000		
/20	0501.213.687		BRAKE ANCHOR PLATE	1				10		
/60	0501.213.688		SEAL KIT	1				1,520		
/80	0501.215.083		PRESSURE PIECE	1				0,700		
/90	0501.213.690		ADJUSTING KIT	1				0,180		
/100	0501.218.921		BRAKE LINING	1			Belag ProTecS	10		
/130	0501.319.947		ASSEMBLY GREASE	1				0,007		
60	0636.101.829		CAP SCREW	4			M20X1,5X65	0,220		
350	0501.316.953		BRAKE DISC	1				33,360		
351	0730.104.366		WASHER	10			S=2,5;A=2,5	7		
352	0636.101.741		CAP SCREW	10			M16X1,5X50	0,110		
358	0501.320.845		PULSE DISC	1				0,168		
850	0501.324.075		BRAKE CYLINDER	1			BS3538-K003170	3,200		
860	0637.011.615		LOCKING NUT	2			M16X1,5	0,028		



Plant

Page 2 from 3

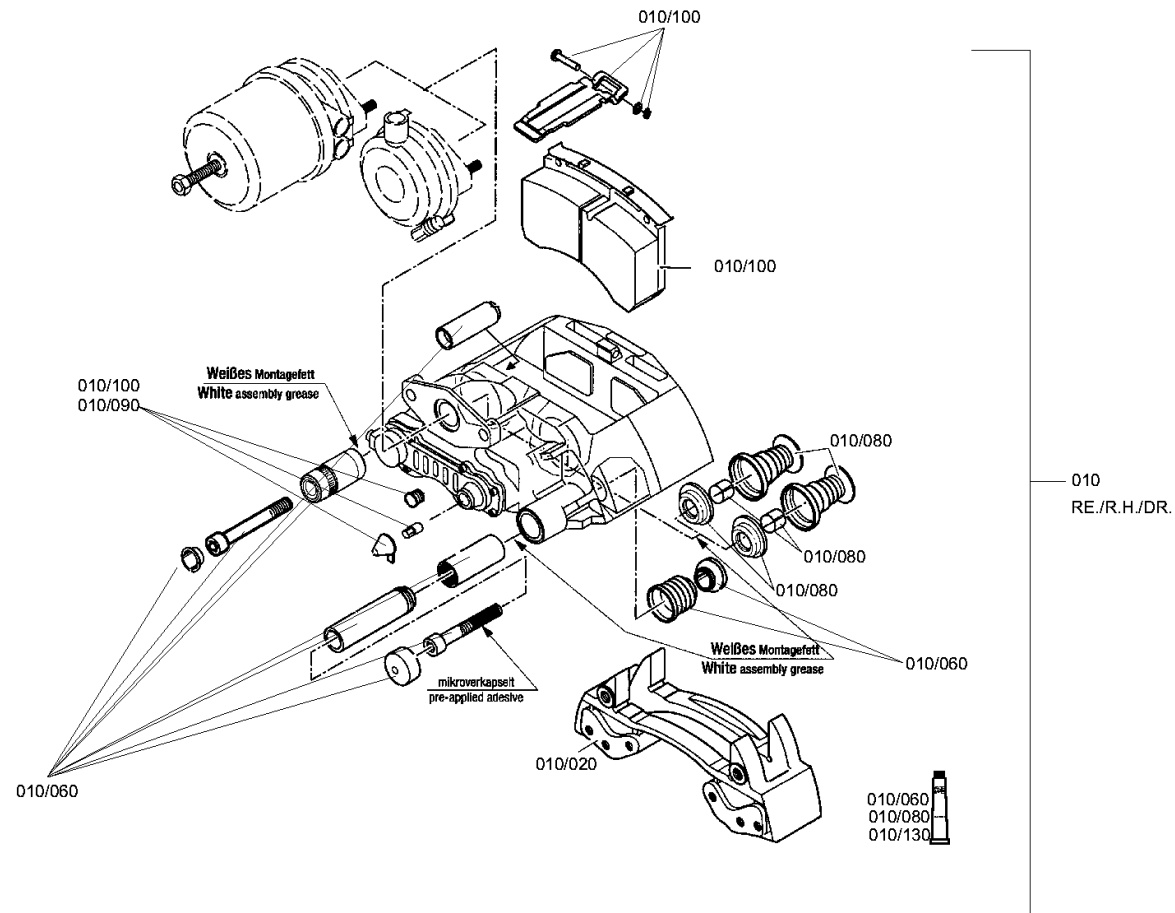
Material number: 4474.085.199

Plant: 446212294502

Material-assembly-group-no: 4462.122.945

RL 85 A / NOVABUS

BRAKE



Plant

Page 3 from 3

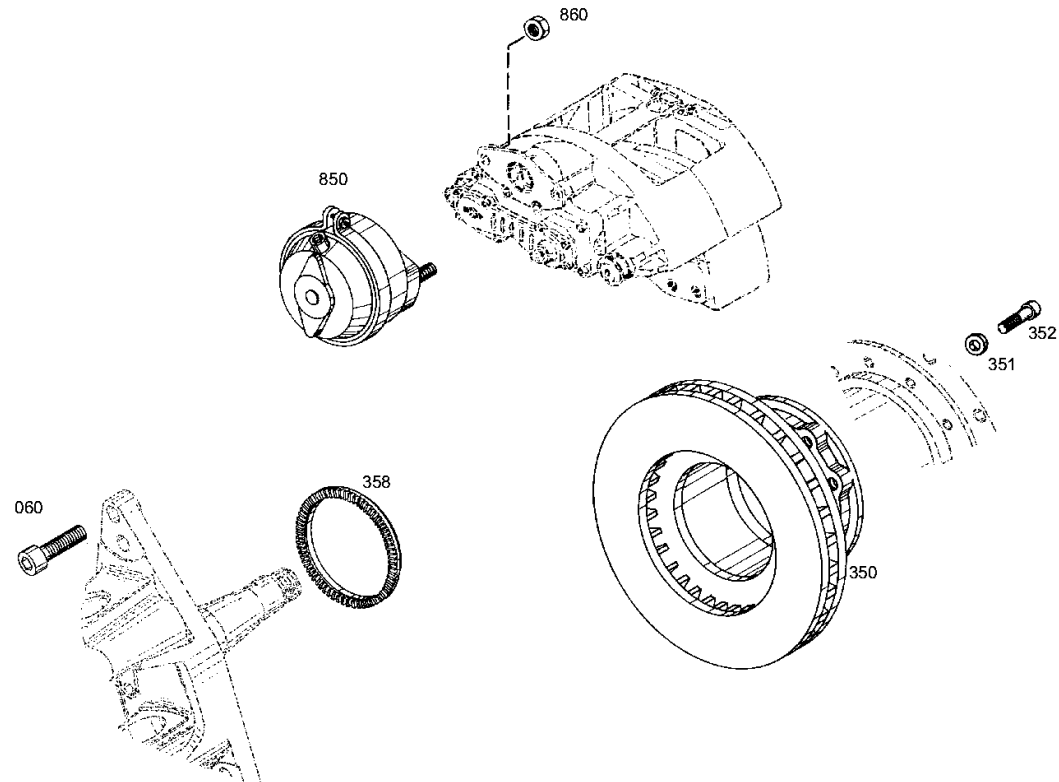
Material number: 4474.085.199

Plant: 446212294503

Material-assembly-group-no: 4462.122.945

RL 85 A / NOVABUS

BRAKE



Parts list

Page 1 from 1

Material number: 4474.085.199

RL 85 A / NOVABUS

Plant: 446212294501

Material-assembly-group-no: 4462.122.945



Pos.	Material number	Customer material	Name	Quantity	ME	Amend. no.	Techn. Info.	Weight	Rep kit	Alternative material
10	0501.008.892		DISC BRAKE	1				41,500		
/10	0501.220.398		CALIPER	1				0,000		
/20	0501.213.687		BRAKE ANCHOR PLATE	1				10		
/60	0501.213.688		SEAL KIT	1				1,520		
/80	0501.215.083		PRESSURE PIECE	1				0,700		
/90	0501.213.690		ADJUSTING KIT	1				0,180		
/100	0501.218.921		BRAKE LINING	1			Belag ProTecS	10		
/130	0501.319.947		ASSEMBLY GREASE	1				0,007		
60	0636.101.829		CAP SCREW	4			M20X1,5X65	0,220		
350	0501.316.953		BRAKE DISC	1				33,360		
351	0730.104.366		WASHER	10			S=2,5;A=2,5	7		
352	0636.101.741		CAP SCREW	10			M16X1,5X50	0,110		
358	0501.320.845		PULSE DISC	1				0,168		
850	0501.324.075		BRAKE CYLINDER	1			BS3538-K003170	3,200		
860	0637.011.615		LOCKING NUT	2			M16X1,5	0,028		