



Order no.: 5871 216 902

# **Lubrication and Maintenance Instructions**

## **ZF-PORTAL AXLE AVN-132**

**Version – Wheel head with compact bearing**



**ZF Passau GmbH**

**Donaustr. 25 - 71**

**D- 94034 Passau**

## Preface

This documentation has been developed for specialized staff trained by ZF Passau for repair and maintenance work to be made on ZF units.

Due to the continuous technical upgrading of the product, however, the maintenance of the unit at your disposal may require both deviating work steps and differing setting and test data.

This manual is based on the state-of-the-art at the time of printing.

It was prepared with utmost care in order to avoid errors.

However, we shall not be liable for any possible errors in figures or descriptions.

We reserve the right to make modifications without prior notice.

The owner and the user shall be responsible for complying with the safety instructions and for implementing the maintenance work according to the specified guidelines.

ZF shall not be liable for any incorrect installation, improper handling, insufficient maintenance, improperly or incompetently performed work and any consequential damage resulting thereof.

It is **imperative** to observe the relevant instructions and manuals of the vehicle manufacturer.

Important information regarding technical reliability and operational safety are highlighted by the following symbols:



**This is applicable for instructions to be observed for maintenance, operation or handling of the vehicle!**



**Refers to working and operating processes which must be strictly observed to avoid any damage to or destruction of the unit or to exclude any endangerment to persons!**

## IMPORTANT INSTRUCTIONS

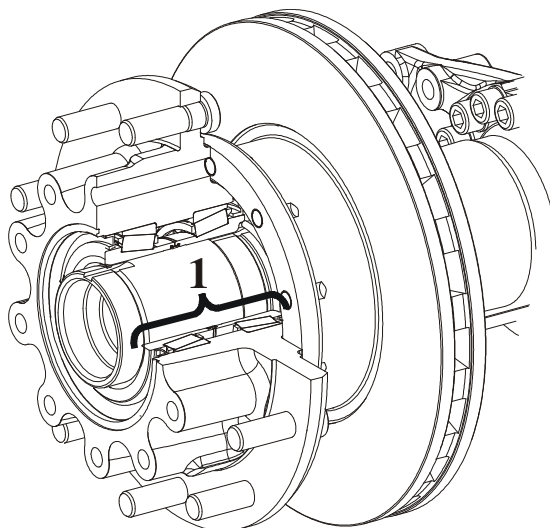
### 1. Grease quality / Grease change interval (wheel head with compact bearing):

According to ZF-List of Lubricants TE-ML 12!

The ZF list of Lubricants is being continuously updated and can be obtained or viewed as follows

- In all ZF plants
- In all ZF Service Centers
- Internet <http://www.zf.com/Service/Techn. Information>

### 2. Grease change compact bearing (1):



Old grease to be disposed of ecologically and according to the legal provisions!

### 3. Grease change-compact bearing (wheel head):



When changing grease within the maintenance interval, it is necessary to completely disassemble the compact bearing.

For the necessary specifications with regard to disassembly and reassembly of wheel head (special tool, setting values etc.) please refer to the Repair Manual.

The internal investigation of the compact bearing and the resulting grease change outside of the maintenance interval must also be carried out in the following cases:

Grease leakage on the shaft seal of the brake disk side.

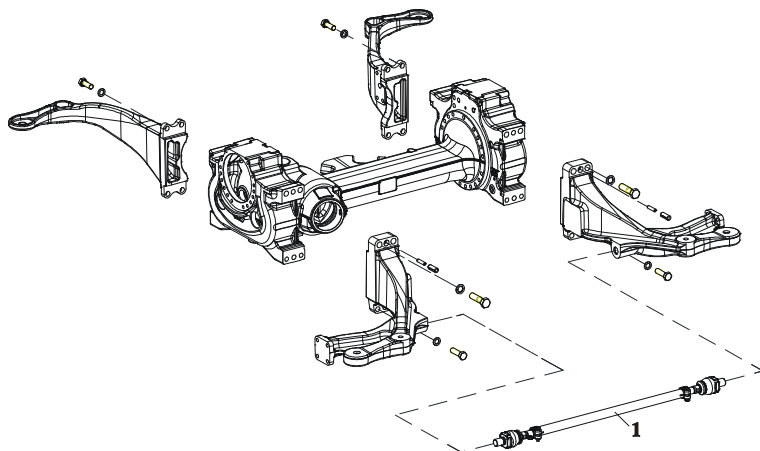
Shaft seals must always be checked when changing the brake disk.

Overheated brake parts (e.g. burnt bellows on pressure pieces).



**Do not use grease types other than those approved by ZF, see List of Lubricants TE ML 12!**

## 4. Axle version with stabilizer link:



Once a year it is necessary to verify that the supporting rod (1) has zero backlash and readjust, if required!