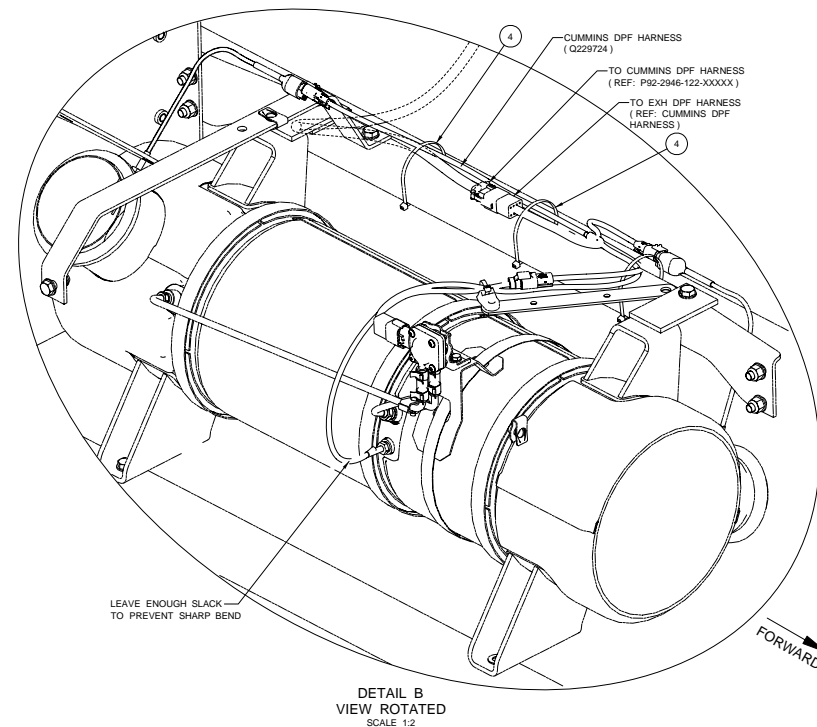
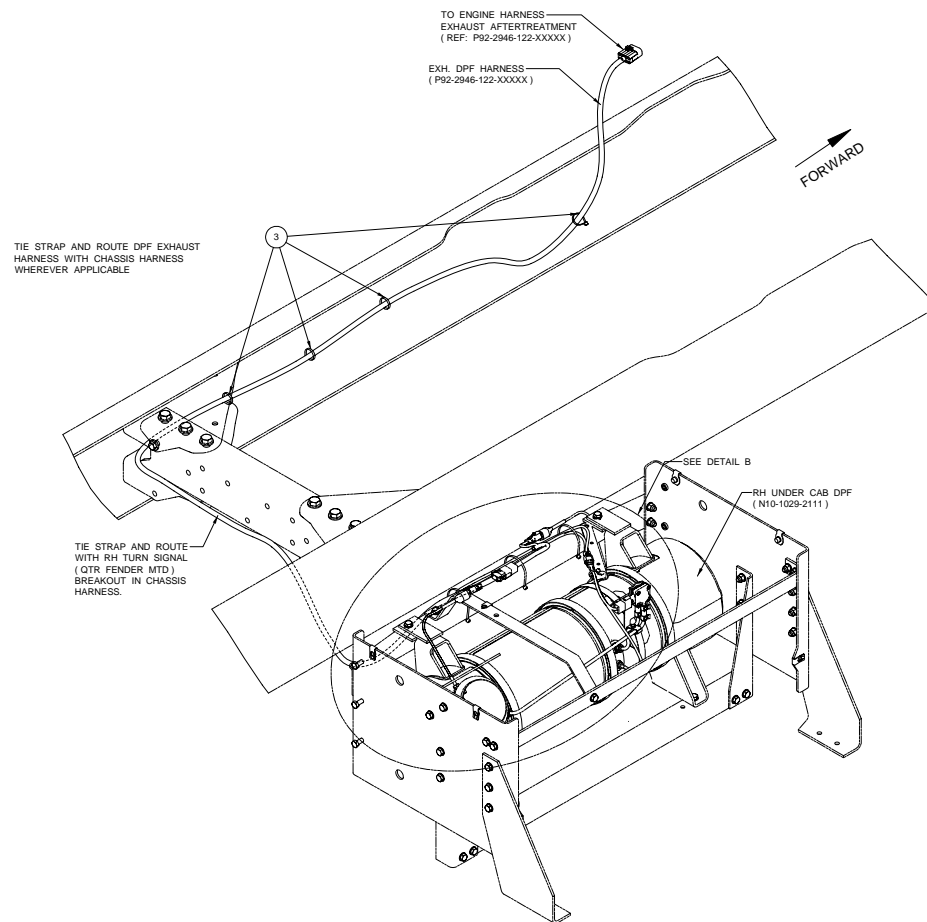
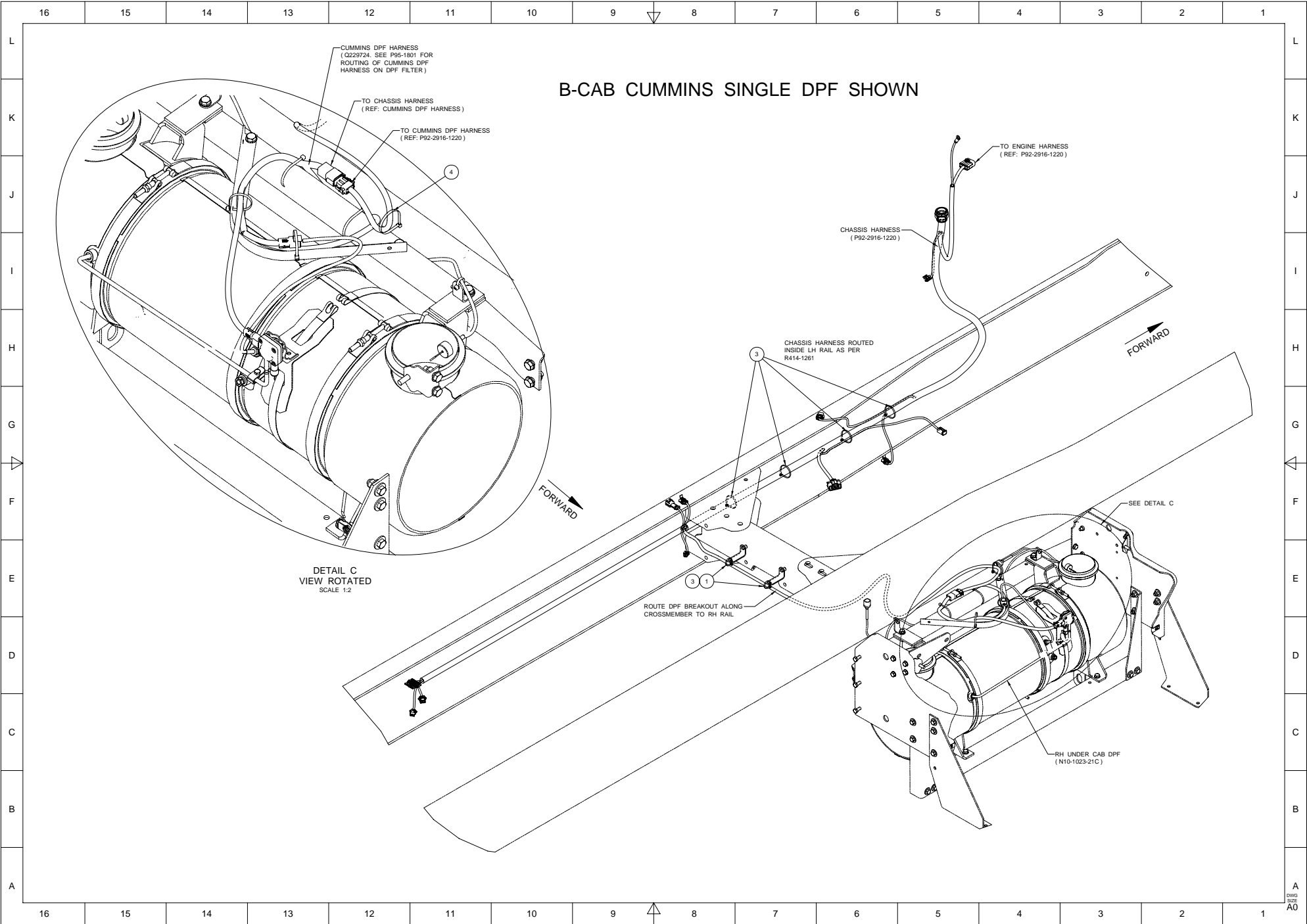


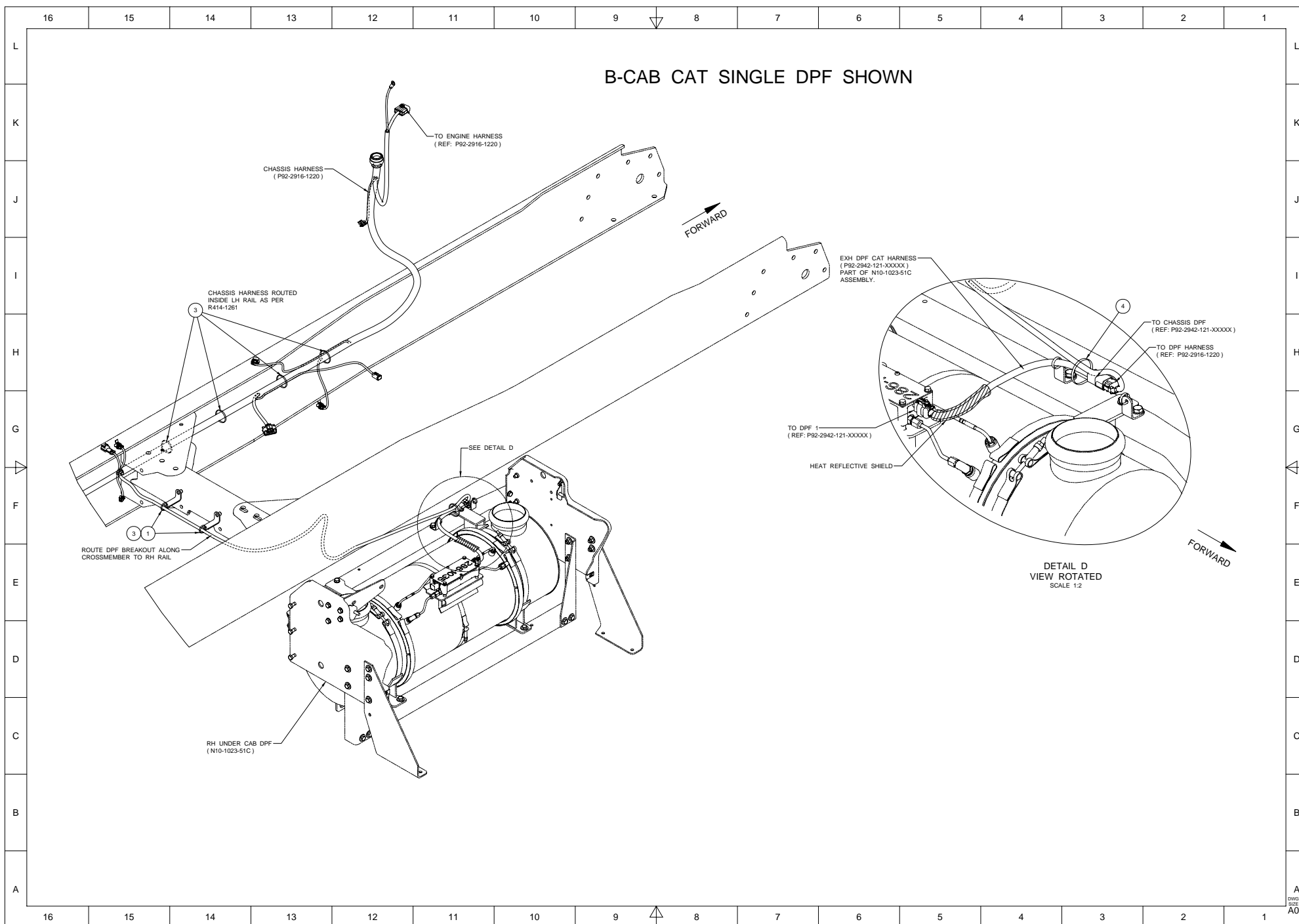
T300 PX-6 / PX-8 SINGLE DPF SHOWN

- NOTES:
- 1) USE WITH T800, T600, W900, C500 OR T300 MODELS WITH 2007 EMISSIONS ENGINES AND WITH RH UNDER CAB DPF.
  - 2) USE SHEET 1 FOR T300 PX-6/PX-8, SINGLE DPF.  
USE SHEET 2 FOR B-CAB CUMMINS, SINGLE DPF.  
USE SHEET 3 FOR B-CAB CAT, SINGLE DPF.  
USE SHEET 4 FOR B-CAB CAT DUAL DPF.



B-Cab CAT DUAL	B-Cab CAT	B-Cab CUMMINS	T3 PX-6 / PX-8		
AR	AR	AR	AR	4	K231-363HTMP STRAP - HEAVY DUTY TIE
AR	AR	AR	AR	3	K231-363-172 STRAP - HEAVY DUTY TIE
2	-	-	2	K028-2488-6	BRACKET - STRAIGHT STANDOFF
AR	AR	AR	-	1	K299-763 BRACKET - 90 DEG STANDOFF





## B-CAB CAT DUAL DPF SHOWN

