

FLA COE
FLB COE
FLD Conventional
Business Class
FLC 112 Conventional

Century Class Conventional
Argosy COE
Cargo
Columbia

Coronado
Business Class M2
> Cascadia
108SD/114SD

**Freightliner
Service Bulletin**

General Information

Water and dirt accumulation on the Cascadia primary mirrors may produce some customer complaints. Optional add-on deflectors that mount on the inboard side of the mirror back cover (housing) have been developed to address these complaints. See [Fig. 1](#). The function of these deflectors is to direct the air, water, and dirt away from the mirror surface when the vehicle is in motion. To resolve customer complaints of water and dirt accumulation on the primary mirrors, install the mirror deflectors using the procedure in this bulletin.

Parts

Parts are available through the PDCs. See [Table 1](#).

Parts		
Part Number	Description	Qty.
22-61723-002	Rain Deflector, LH	1
22-61723-003	Rain Deflector, RH	1
N000000 000452	Screw	6 each side

Table 1, Parts

Procedure

1. Park the vehicle on a level surface, shut down the engine, and set the parking brake. Chock the tires.
2. Remove the flat mirror glass carrier as follows.
 - 2.1 Actuate the flat mirror as far left as possible.
 - 2.2 To unlock the flat glass carrier, support the glass carrier while pushing up the retainer ring locking tab, located behind the right-hand edge of the glass carrier; see [Fig. 2](#).
 - 2.3 Disconnect the mirror heater wires from the back of the flat glass carrier.
3. Use the deflector as a template for drilling, as follows.
 - 3.1 Determine the orientation of the deflector by positioning it against the flange on the inboard edge of the mirror housing.

NOTE: The LH and RH deflectors are not identical. Use each deflector to mark the drilling locations for the mirror on which it will be installed.

 - 3.2 Add a thin layer of grease to the end of each boss on the inside of the deflector. Wipe off any grease from the shanks of the bosses.
 - 3.3 Place the edge of the deflector against the flange on the inboard edge of the mirror back cover. Rotate the deflector onto the surface of the back cover, then press it against the back cover to transfer the grease markings to the surface. See [Fig. 3](#).
4. Remove the deflector, then, using a scribe, create pilot dimples at the center of each mark.
5. Tilt the convex mirror down and out of the way. Using a 3/16-inch bit, drill through the housing, perpendicular to the surface, at each marked location.
6. Remove the four screws that attach the back cover to the mirror arm; see [Fig. 4](#).

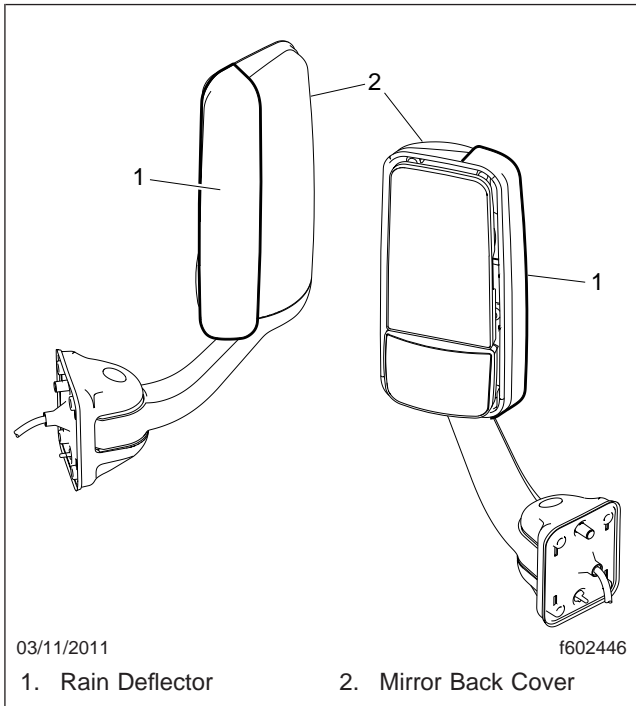
Freightliner
Service BulletinFLA COE
FLB COE
FLD Conventional
Business Class
FLC 112 ConventionalCentury Class Conventional
Argosy COE
Cargo
ColumbiaCoronado
Business Class M2
> Cascadia
108SD/114SD

Fig. 1, Mirror Rain Deflector

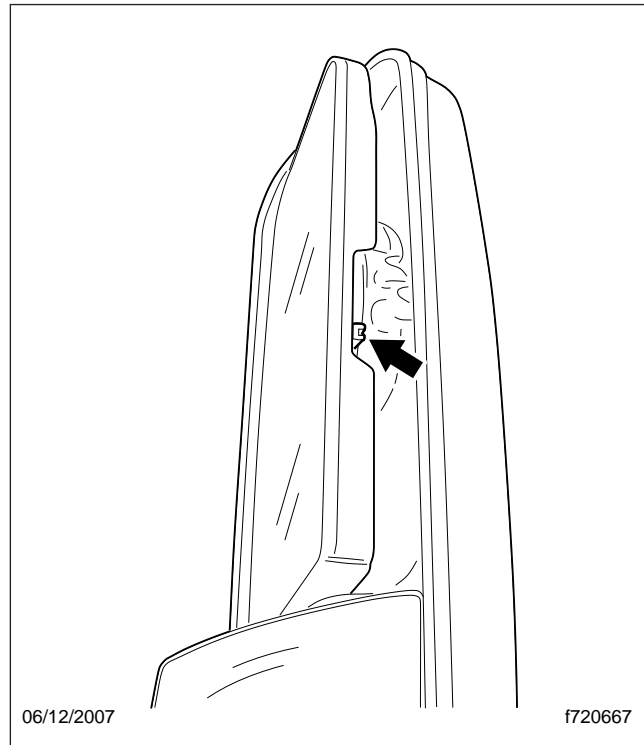


Fig. 2, Flat Glass Carrier Locking Tab

NOTICE

Do not overtighten the deflector mounting screws. Overtightening the screws can cause the deflector to crack.

7. Tilt the back cover backward in order to access the hole drilled at the upper inboard corner. Install the top outboard self-tapping screw loosely in the back cover. See [Fig. 5](#).
8. Position the deflector on the back cover, then carefully tighten the top outboard screw to secure it in place.
9. Tilt the back cover into place, then carefully install the other deflector mounting screws; see [Fig. 6](#).
10. Attach the back cover to the mirror arm with the four screws. Tighten the screws 13 to 17 lbf·in (145 to 190 N·cm).
11. Install the flat mirror glass carrier as follows.
 - 11.1 Connect the mirror heater wires to the back of the flat glass carrier. Note that the heater is not polarity sensitive.
 - 11.2 Make sure that the circular foam pad is in place on the back of the glass carrier.
 - 11.3 With the actuator rotated as far left as possible, carefully align the flat glass carrier on the actuator. Apply light pressure on the glass to hold it in place, and pull down the retainer ring locking tab. See [Fig. 2](#). Make sure that the glass carrier is securely locked in place.

FLA COE
FLB COE
FLD Conventional
Business Class
FLC 112 Conventional

Century Class Conventional
Argosy COE
Cargo
Columbia

Coronado
Business Class M2
> Cascadia
108SD/114SD

**Freightliner
Service Bulletin**

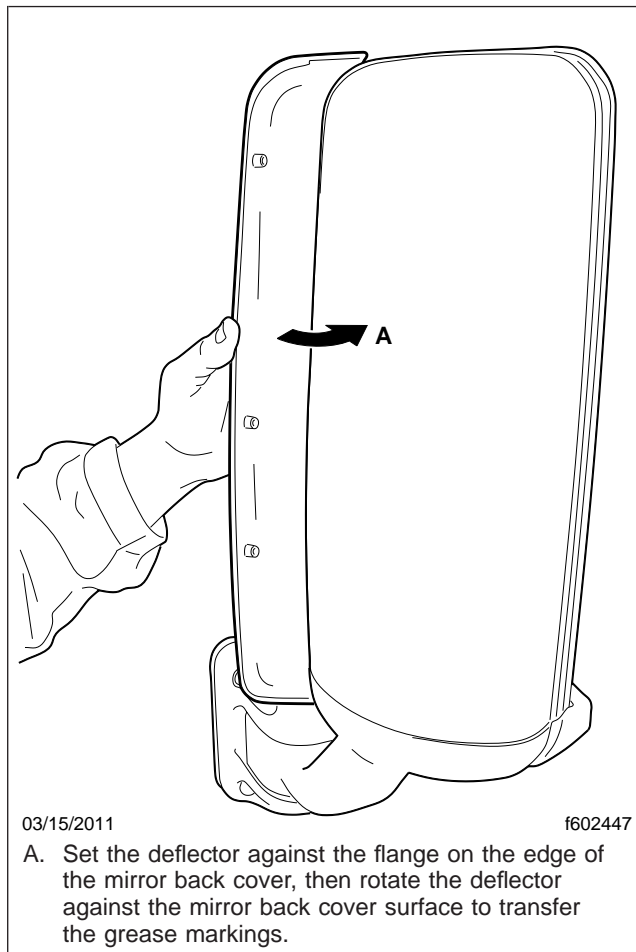


Fig. 3, Using the Deflector to Mark Drilling Locations to Mirror Back Cover

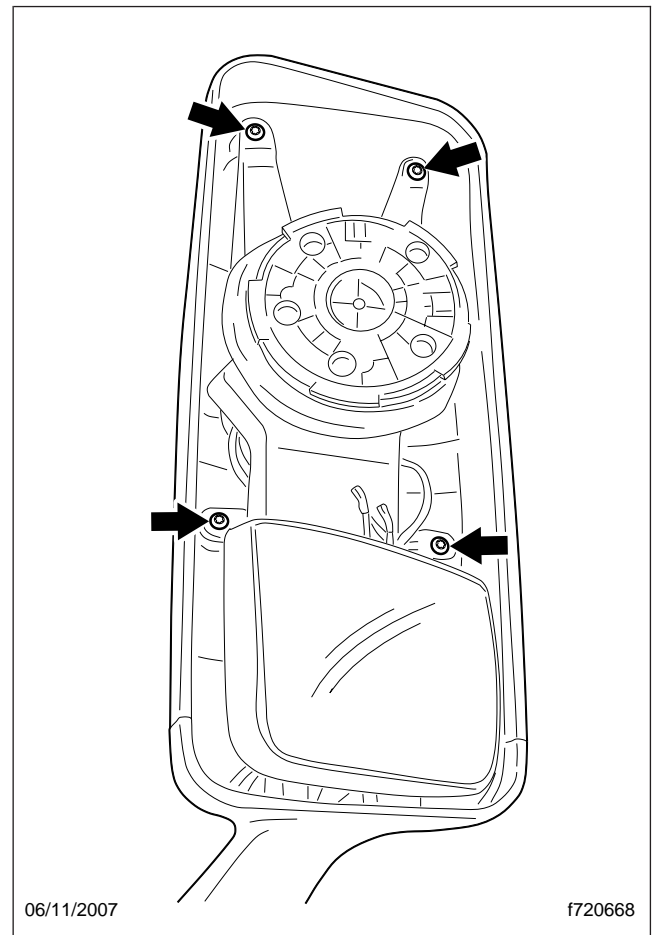


Fig. 4, Back Cover Screws

Warranty

This is an informational bulletin only. Warranty does not apply.

Freightliner Service Bulletin

FLA COE
FLB COE
FLD Conventional
Business Class
FLC 112 Conventional

Century Class Conventional
Argosy COE
Cargo
Columbia

Coronado
Business Class M2
> Cascadia
108SD/114SD

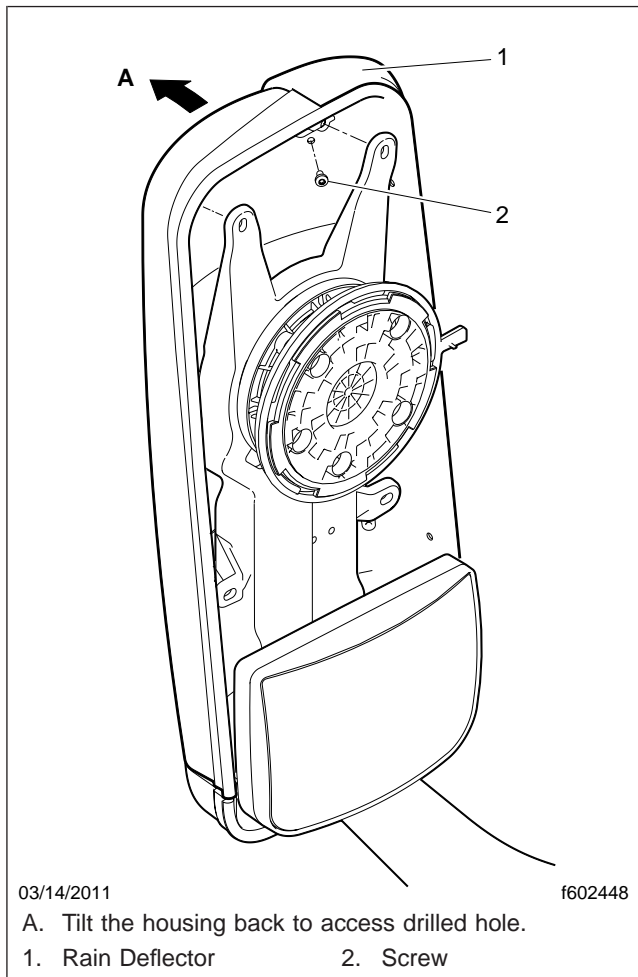


Fig. 5, Installing Top Outboard Screw

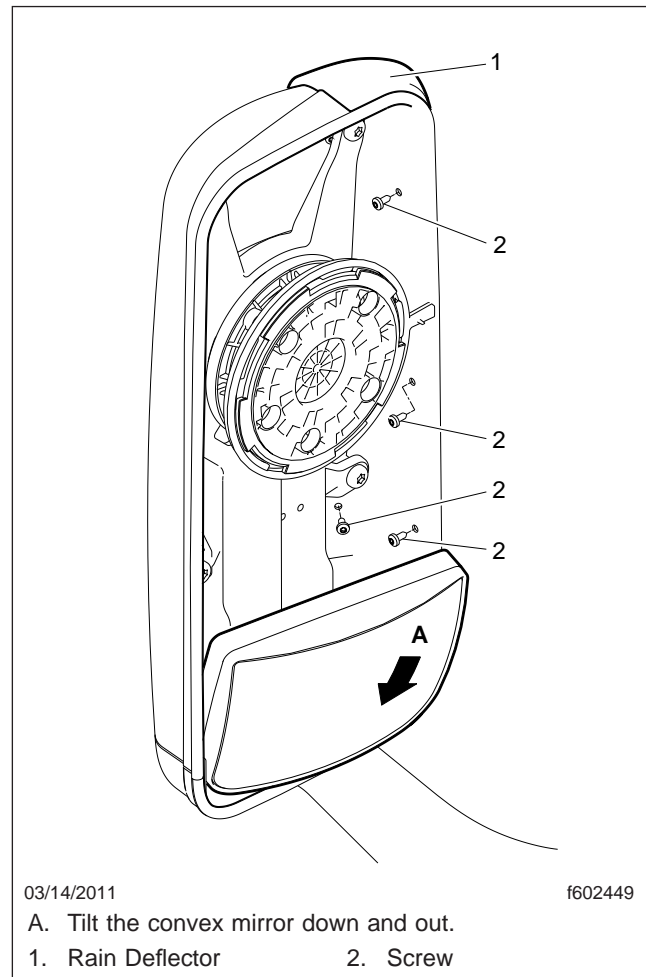


Fig. 6, Installing Remaining Screws