

Erroneous SAM Cab Fault Codes for Body Builder Connector

54-257

FLA COE
FLB COE
FLD Conventional
Business Class
FLC 112 Conventional

Century Class Conventional
Argosy COE
Cargo
Columbia

Coronado
Business Class M2
> Cascadia
108SD/114SD

**Freightliner
Service Bulletin**

Description of Revisions: *This bulletin replaces the version dated October 2010. Information is added about the release date for SAM 6.0 software.*

General Information

Some Cascadia vehicles with SAM Cab software release 6.0 (software version 09.31.005) may report active body builder connector faults on vehicles that do not have body builder connector circuits.

SAM software release 6.0 (software version 09.21.005) began production usage on August 2, 2010.

This bulletin describes how to identify the erroneous faults, and how to disable detection of those faults using SAM Cab parameters.

A factory fix to prevent erroneous reporting of body builder connector faults was implemented October 25, 2010.

Identifying and Disabling Erroneous Body Builder Connector Faults

If the vehicle reports a fault listed in [Table 1](#), and no circuit is connected to the corresponding pin, then make the parameter change indicated in [Table 2](#) to disable detection of these faults.

SAM Cab 6.0 Body Builder Connector Faults That Can Be Disabled				
ECU	SPN	FMI	Fault Description	Connector/Pin
33	521009	3	Body builder connector: backup light – Voltage above normal, or shorted to high source.	conn X9, pin 9
	521010		Body builder connector: marker lights – Voltage above normal, or shorted to high source.	conn X9, pin 10
	521012		Body builder connector: tail lights – Voltage above normal, or shorted to high source.	conn X9, pin 12
	521013		Body builder connector: turn right – Voltage above normal, or shorted to high source.	conn X9, pin 13
	521014		Body builder connector: turn left – Voltage above normal, or shorted to high source.	conn X9, pin 14
	521015		Body builder connector: stop lights – Voltage above normal, or shorted to high source.	conn X9, pin 15

Table 1, SAM Cab 6.0 Body Builder Connector Faults That Can Be Disabled

NOTE: Use the "Features" drop down menu at the top of the page on ServiceLink to filter the SAM Cab Parameters screen. See [Fig. 1](#).

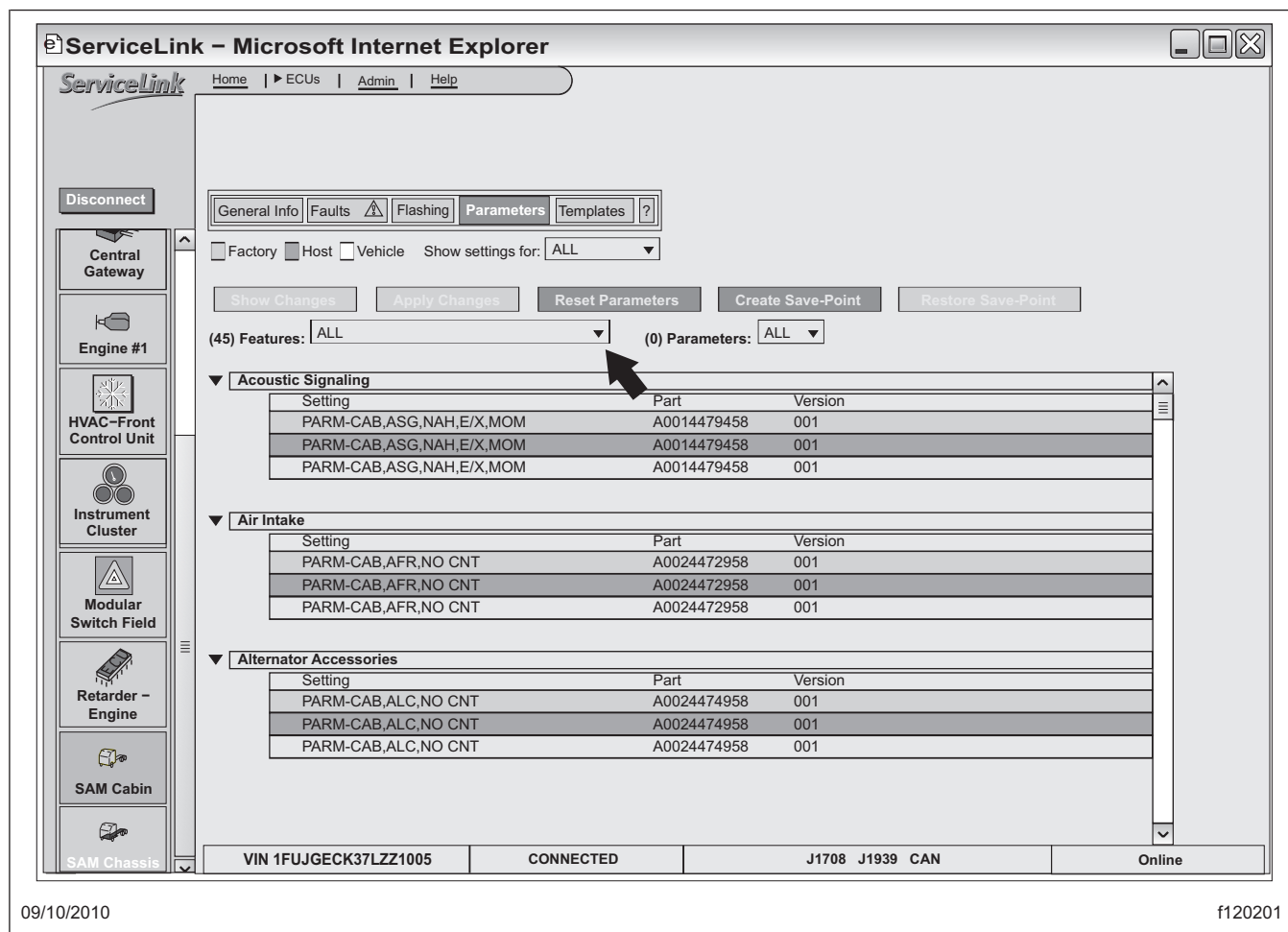
Freightliner
Service BulletinFLA COE
FLB COE
FLD Conventional
Business Class
FLC 112 ConventionalCentury Class Conventional
Argosy COE
Cargo
ColumbiaCoronado
Business Class M2
> Cascadia
108SD/114SD

Fig. 1, Location of Features Filter on ServiceLink Parameters Screen

Disabling Body Builder Connector Faults on SAM Cab 6.0

ServiceLink Feature*	Parameter with Fault Reporting	Parameter to Disable Fault Reporting
Body Builder Connector Fault Reporting	A0044473758 PARM-CAB, BBC, S2B	A0044473658 PARM-CAB, BBC, NFR

* Use this feature to filter the SAM Cab Parameters screen in ServiceLink using the "Features" dropdown menu at the top of the page.

Table 2, Disabling Body Builder Connector Faults on SAM Cab 6.0

Warranty

This procedure is warrantable only if the described condition exists and the repair is performed within the applicable base or extended coverage warranty period. If a failure is not found, this procedure is considered preventive and warranty does not apply.

See [Table 3](#) for QuickClaim damage code and labor allowance information. Refer to this service bulletin by number at the beginning of the claim comments.

Erroneous SAM Cab Fault Codes for Body Builder Connector

54-257

FLA COE
FLB COE
FLD Conventional
Business Class
FLC 112 Conventional

Century Class Conventional
Argosy COE
Cargo
Columbia

Coronado
Business Class M2
> Cascadia
108SD/114SD

**Freightliner
Service Bulletin**

See [Table 4](#) for OWL VMRS codes and labor allowance information. Enter this service bulletin number in the *Service Bulletin #*: field.

QuickClaim Damage Code and Labor Allowance			
Damage Code	SRT Code	Description	Time: Hours
32A-001595648	32A-5020A	Parameters, SAM Cab, Update to Disable Nuisance Faults	0.3

Table 3, QuickClaim Damage Code and Labor Allowance

OWL VMRS Codes and Labor Allowance				
Component Code	Cause Code	SRT Code	Description	Time: Hours
003-006-016	95	32A-5020A	Parameters, SAM Cab, Update to Disable Nuisance Faults	0.3

Table 4, OWL VMRS Codes and Labor Allowance