

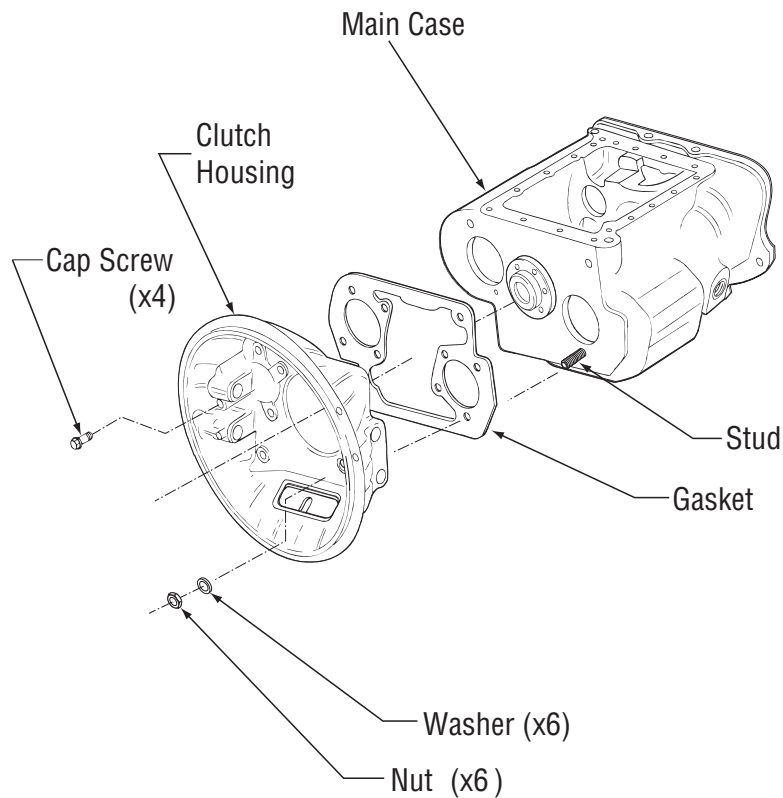
How to Remove the Clutch Housing

Special Instructions

None

Special Tools

- Typical service tools



Procedure -

1. From inside the Clutch Housing, remove the six (6) nuts and washers.
2. From inside the Clutch Housing, remove the four (4) capscrews.
3. Jar the Clutch Housing with a soft mallet to break the gasket seal.
4. Pull the Clutch Housing from the studs and Transmission Case.
5. Remove the gasket and clean the gasket mounting surfaces on the Clutch Housing and Main Case.