

Transmission Overhaul Procedures - Bench Service

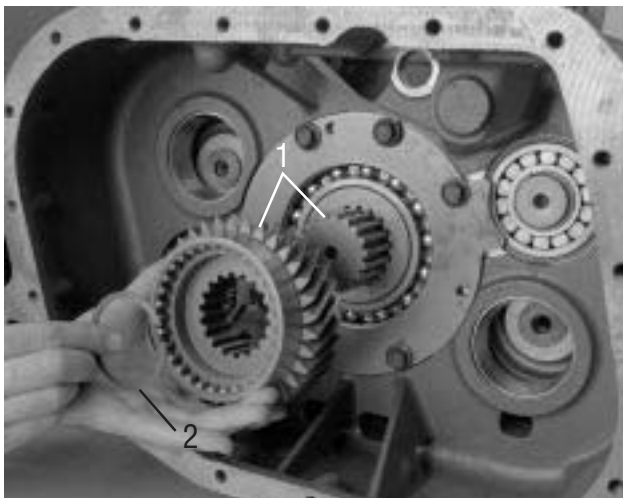
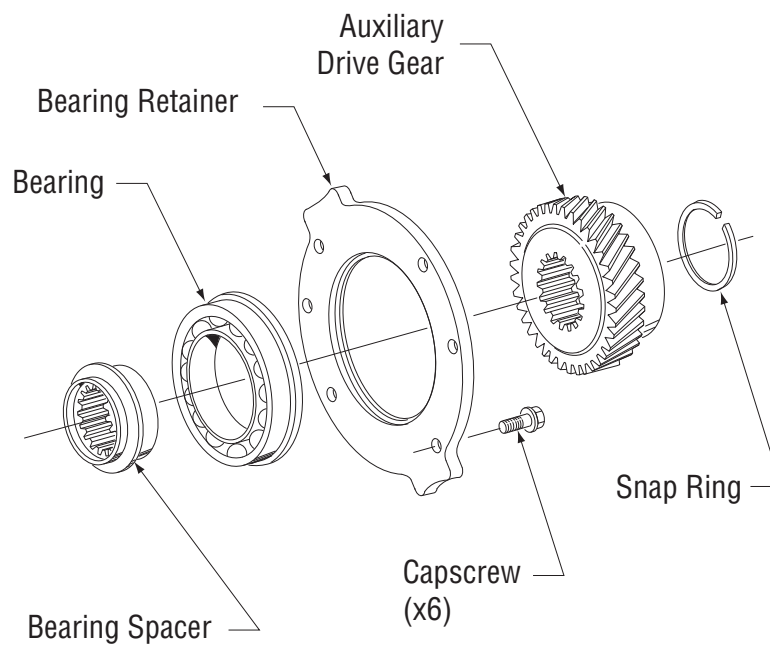
How to Install the Auxiliary Drive Gear Assembly

Special Instructions

None

Special Tools

- Typical service tools



Procedure -

1. Install the Auxiliary Drive Gear over the Mainshaft splines.
2. Install the Auxiliary Drive Gear Retaining Snap Ring in the Mainshaft Snap Ring groove. If necessary, slide the Mainshaft rearward to fully expose the groove.