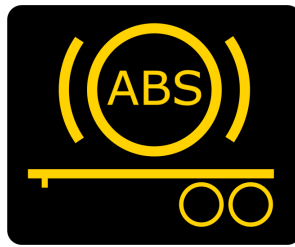
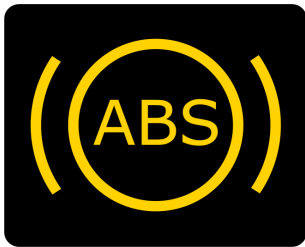


Review 2.6.2

Lesson 2.4.3

QUESTION : 1



What happens when one of these indicators remains on?

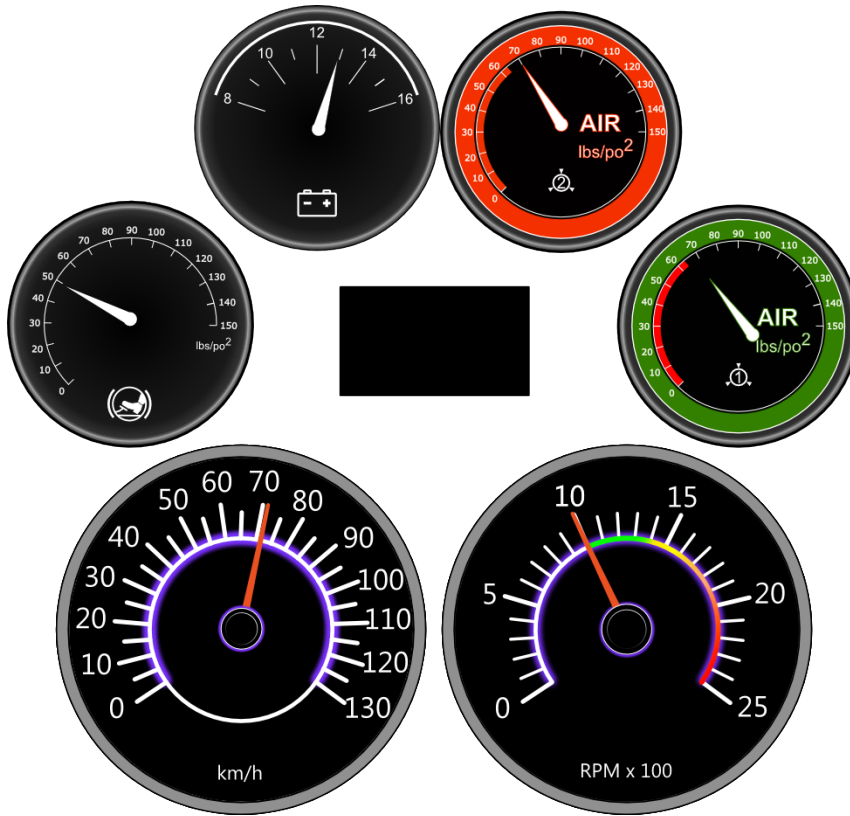
ANSWER CHOICES: Only one correct answer **X**
Several possible answers

- | | |
|--|--|
| A) Parking brakes will apply in a certain time to avoid a break on the braking systems | |
| B) The ABS brake system has a failure. The service brakes still work but without ABS. | |
| C) The ABS brake system is functional. | |
| D) ABS brake systems have a failure and there is no more braking possible | |

Refer to:

Lesson 2.4.2

QUESTION 2:
Identify all gauges showing an anomaly



ANSWER CHOICE: Only one answer possible
 Several possible answers **X**

A) The primary air gauge

B) The secondary air gauge

C) The brake application gauge

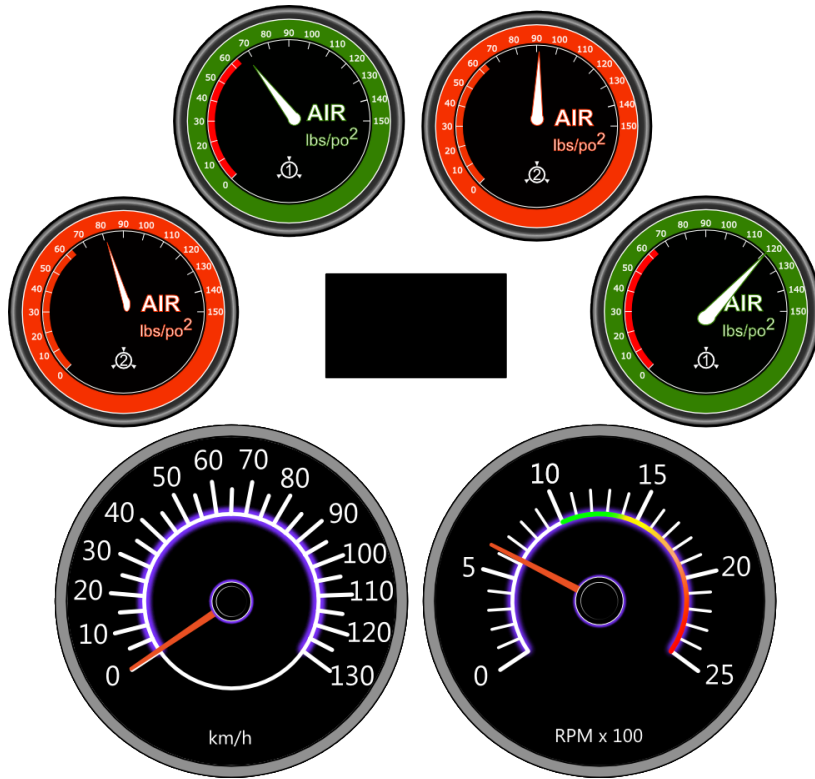
D) The battery voltage gauge

Refer to:

Lesson : 2.4.1

QUESTION 3:

Which of these gauges indicate the minimum efficiency of the compressor?



ANSWER CHOICE: Only one possible answer **X**
Several possible answers

A) The gauge indicating 90 psi

B) The gauge indicating 120 psi

C) The gauge indicating 80 psi

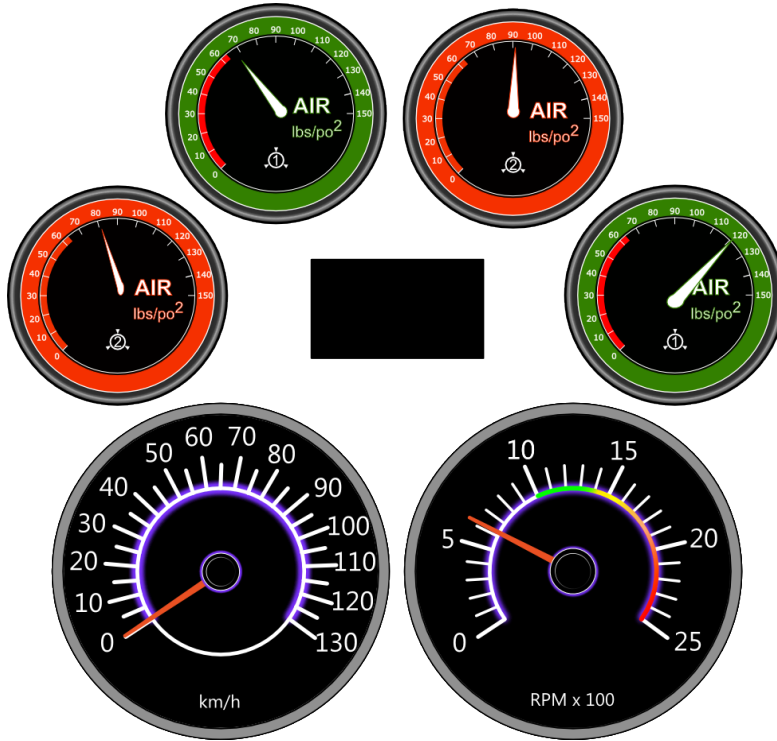
D) The gauge indicating 70 psi

Feedback if wrong answer:

Lesson : 2.4.1

QUESTION 4:

Which gauge indicates the minimum starting pressure of the compressor?



ANSWER CHOICE: Only one possible answer **X**
 Several possible answers

A) The gauge indicating 90 psi

B) The gauge indicating 120 psi

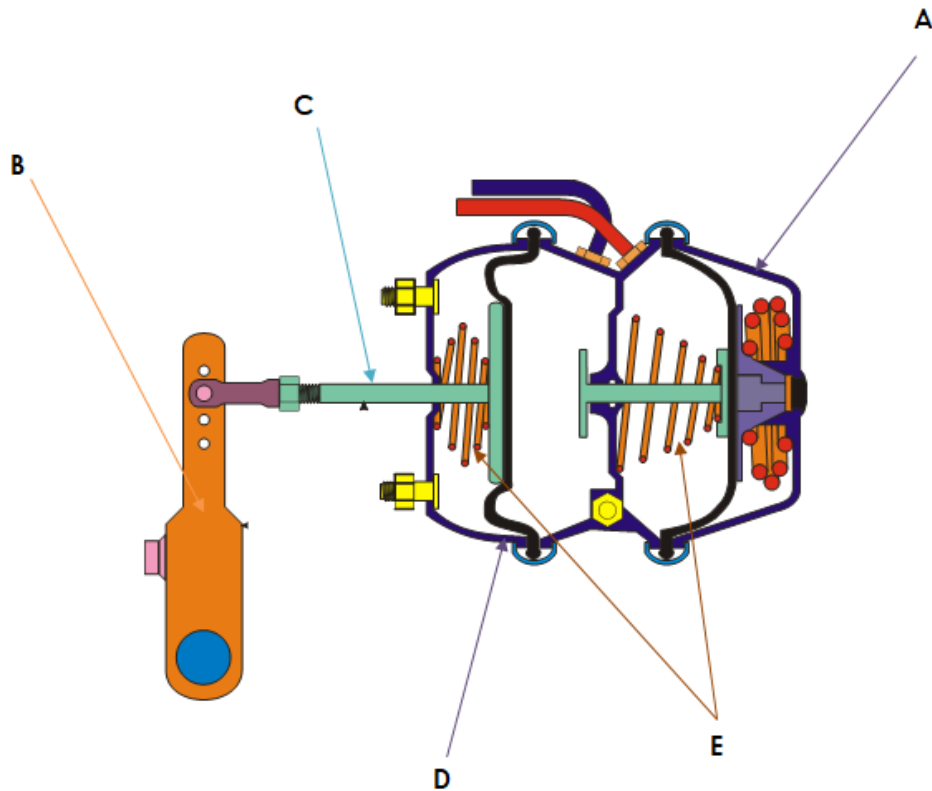
C) The gauge indicating 70 psi

D) The indicating 80 psi

Feedback if wrong answer:

Lesson 2.4.2

QUESTION 5: This is an illustration of a dual brake receiver. Associate each letter in the diagram with the parts named below.



Parts

Answers (letter)

- 1 Spring brake cylinder
- 2 Slack adjuster
- 3 Returning springs
- 4 Push rod
- 5 Diaphragm

Feedback if wrong answer:

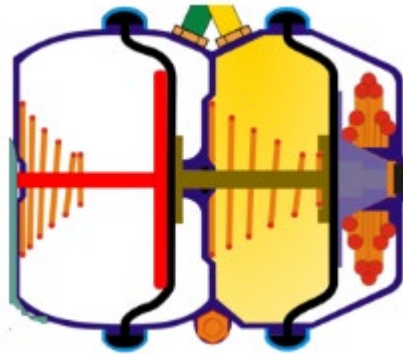
QUESTION 6 :

What would be the best way to save your brakes in a steep downhill?	
ANSWER CHOICE: Only one possible answer X Several possible answers	
A) Anticipate and slow down	
B) Anticipate, slow down and use the engine brake	
C) Anticipate, slow down, downshift and use the engine brake	
D) Slow down and use the engine brake	
Refer to if wrong answer:	

Lesson : 2.4.2

QUESTION: 7

Of the following actions below, which one will allow air to move into the brake booster chamber and compress the parking brake spring.



ANSWER CHOICE: Only one possible answer **X**
Several possible answers

A) By pulling this command



B) By pressing the brake pedal



C) By pushing this command

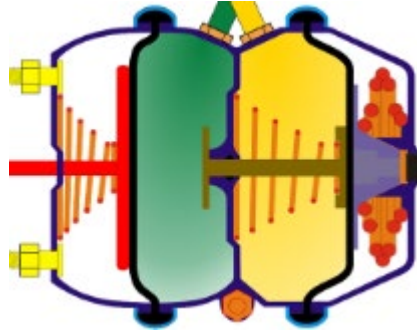


D) None of these answers

Refer to if wrong answer:

Lesson : 2.4.2

QUESTION: 8



Which of the following statements apply to the illustration above?

ANSWER CHOICE: Only one answer possible
Several possible answers **X**

A) The service brake is applied

B) The parking brake is applied

C) The parking brake is released

D) The service brake is released

Refer to if wrong answer:

Lesson : 2.4.2

QUESTION: 9	
Emergency brakes apply when the air pressure (PSI) in the pneumatic system is no longer sufficient to compress the parking spring	
:	
TRUE	
FALSE	
. Refer to if wrong answer:	

Lesson 2.4.2
QUESTION 10



A

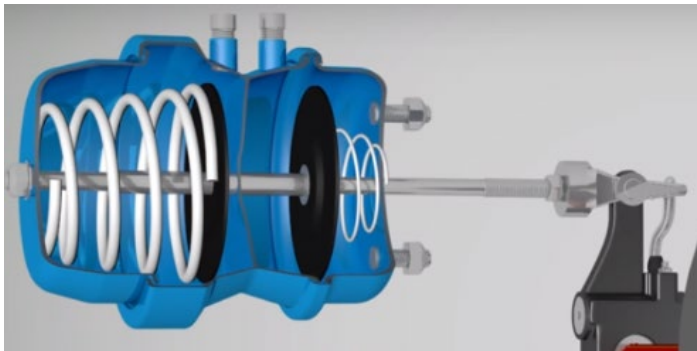


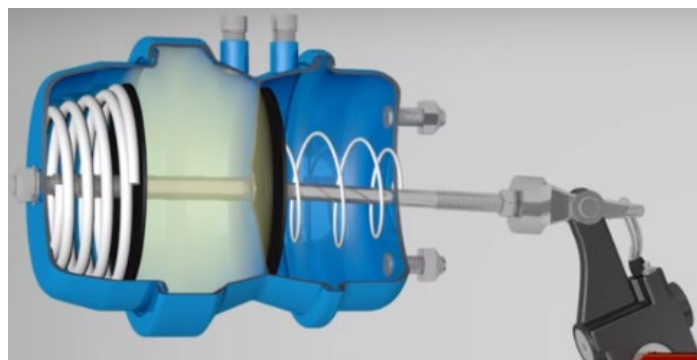
B

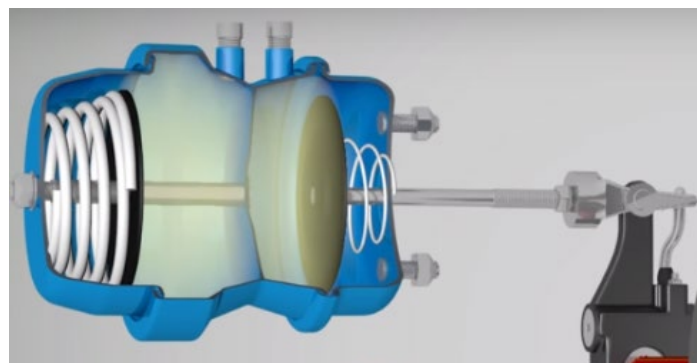


C

Associate illustrations A, B and C above with the following images of dual brake receivers:







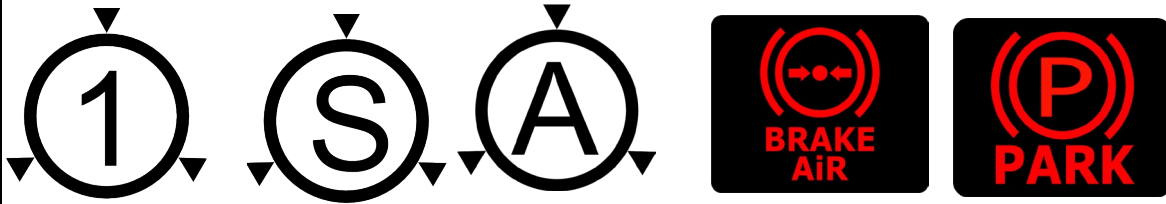
Answers: Corresponding letters:
Refer to if wrong answer:

(AA 2.6.2)

Lesson : 2.4.2

QUESTION: 11

The following pictograms and warning lights are all connected to the air brake system.



TRUE

FALSE

Refer to if wrong answer:

Lesson: 2.4.2

QUESTION: 12



Which one of the following statements applies to the illustration above?

ANSWER CHOICE: Only one possible answer **X**
Several possible answers

A) 30 PSI (psi) is applied by the service brake.

B) 30 PSI (psi) is the volume of air available in the supply tank

C) 30 PSI (psi) is the volume of air in the suspension

D) None of these answers.

Refer to if wrong answer:

Lesson: 2.4.3

QUESTION: 13	
What are the proper procedures when approaching a traffic light in an urban environment?	
ANSWER CHOICE: Only one answer possible Several possible answers X	
A) Accelerate to try to pass on the green light to avoid making a stop and use fuel when the vehicle is restarted.	
B) Anticipate traffic and if the light turns green, try not to stop the vehicle.	
C) Anticipate traffic lights to avoid unnecessary stops	
D) Use the engine brake as much as possible.	
Refer to if wrong answer:	

Lesson : 2.4.3

QUESTION: 14	
What must you do to check the effectiveness of the electric braking system of a trailer?	
ANSWER CHOICE: Only one possible answer X Several possible answers	
A) Put the vehicle in motion and the vehicle does not stop.	
B) Move the vehicle and brake. The vehicle comes to a stop quickly.	
C) Look at the trailer lights.	
D) Disconnect the electrical cable and listen for the leak.	
Refer to if wrong answer:	

Lesson : 2.4.3

QUESTION: 15	
It's major defect if, the brake pedal descends to the floor in less than 10 seconds during the hydraulic brake system test.	
True	
False	
Refer to if wrong answer:	

Lesson : 2.4.1

QUESTION: 16	
The air compressor efficiency test consist of the air compressor ability to achieve or maintain an air pressure of at least 380 kPa (55 psi)	
ANSWER CHOICES :	
True	
False	
Refer to if wrong answer:	

Lesson : 2.4.1

QUESTION: 17	
It's a minor defect if, the compressor starts up at a pressure less than or equal to 550 kPa (80 psi).	
ANSWER CHOICES :	
True	
False	
Refer to if wrong answer:	

Lesson : 2.2.6

QUESTION: 18	
What are the uses of the auxiliary brake system (retarder)?	
ANSWER CHOICE: Only one answer possible Several possible answers X	
A) Additional braking capacity	
B) Serves to slow us down a steep upward slope	
C) Allows you to change gears more slowly	
D) Downhill speed control.	
Refer to if wrong answers:	

Lesson : 2.2.6

QUESTION: 19	
How can the auxiliary brake be cancelled?	
ANSWER CHOICE: Only one answer possible Several possible answers X	
A) Through the switches	
B) By pressing the clutch release (or clutch) pedal	
C) By pressing the accelerator pedal	
D) Through the brake pedal	
Refer to if wrong answer:	

Lesson : 2.2.6

QUESTION: 20	
There are no restrictions on using auxiliary brakes on icy pavement.	
TRUE	
FALSE	
Refer to if wrong answer:	

Lesson : 2.4.1

QUESTION: 21

From the following illustrations, identify the air compressor.

ANSWER CHOICE: Only one possible answer **X**
Several possible answers

A)



B)



C)



D)



Refer to if wrong answer:

Lesson : 2.4.1

QUESTION: 22

Identify the part that start and stop the air compressor.

ANSWER CHOICE: Only one possible answer **X**
Several possible answers

A)



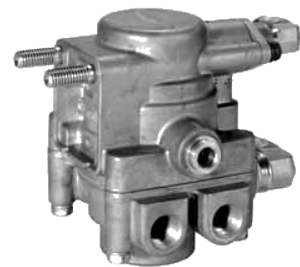
B)



C)



D)



Refer to if wrong answer:

Lesson : 2.4.1

QUESTION: 23

Identify the part that contains the parking spring.

ANSWER CHOICE: Only one possible answer **X**
Several possible answers

A)



B)



C)



D)

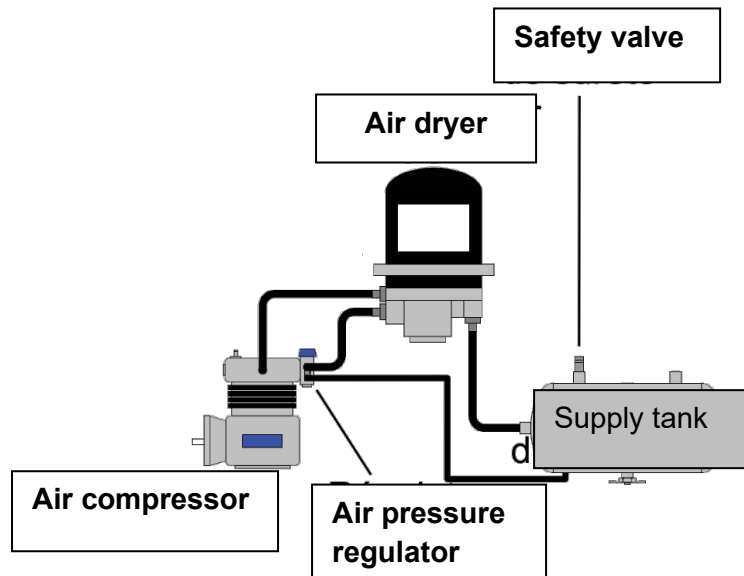


Refer to if wrong answer:

Lesson : 2.4.1

QUESTION: 24

Using the diagram below, identify the path of the compressed air.



ANSWER CHOICE: Only one possible answer **X**
Several possible answers

A) Air compressor; pressure regulator; feed tank

B) Pressure regulator; air dryer; feed tank

C) Air compressor; air dryer; supply tank

D) Pressure regulator; air dryer; air compressor

Refer to if wrong answer:

Lesson : 2.4.1

QUESTION: 25

This control releases the tractor's parking brake when pressed.



:

TRUE

FALSE

Refer to if wrong answer:

Lesson : 2.4.1

QUESTION : 26



The supply tank stores the compressed air from the compressor and then supplies the primary and secondary service tanks.

TRUE

FALSE

Refer to if wrong answer: **Lesson 2.4.1 of the student workbook.**

Lesson : 2.4.1

QUESTION: 27

The parking brake is also the emergency brake and works mechanically.



:

True

False

Refer to if wrong answer:

Lesson : 2.4.1

QUESTION: 28

The parking brake must be applied for the air leak test.

True

False

Refer to if wrong answer:

Lesson : 2.4.1

QUESTION: 29

When the vehicle speed is doubled, the braking distance is twice as long.

True

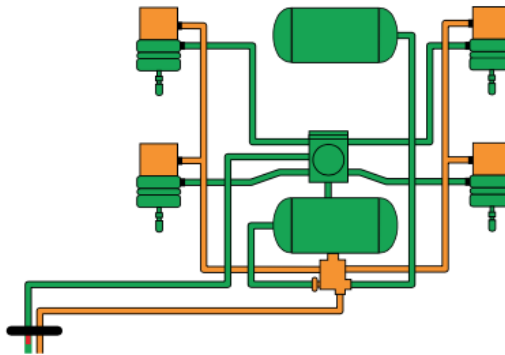
False

Refer to if wrong answer:

Lesson : 2.4.1

QUESTION: 30

Using the diagram below, identify the green part of the circuits?



ANSWER CHOICE: Only one possible answer **X**
Several possible answers

A) The service brake part

B) The parking brake part

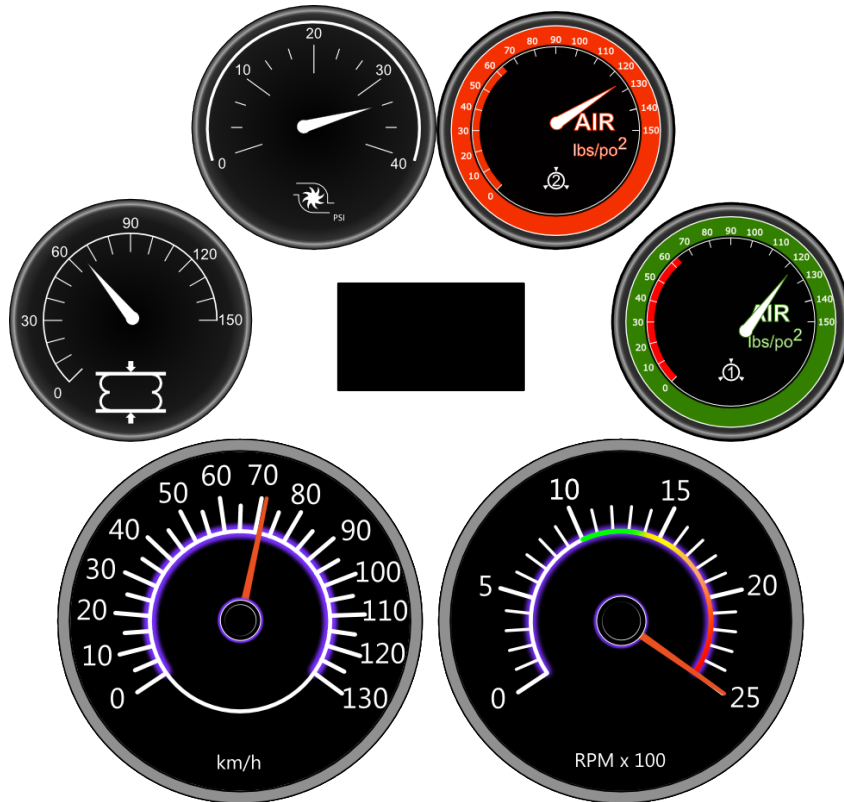
C) The service and parking brake part

D) The compressor part

Refer to if wrong answer:

QUESTION 31:

Identify the gauge showing an anomaly.



ANSWER CHOICE: Only one possible answer **X**
 Several possible answers

A) Air pressure gauges

B) The speed of the vehicle

C) The RPM

D) The air suspension gauge

Refer to if wrong answer:

QUESTION: 32	
How can tire wear be determined?	
ANSWER CHOICE: Only one possible answer <input checked="" type="checkbox"/> X Several possible answers	
A) By looking at the tire	
B) With the wear indicator on the tread	
C) With a pressure gauge	
D) With a \$0.10 coin	
Refer to if wrong answer	

33- Explain in your own words what the term pyrolysis means.

Refer to if wrong answer:

34- Identify at least two situations that could cause the pyrolysis of a tire.

Refer to if wrong answer:

35- Explain in your own words, why the inflation pressure of 11R22.5 truck tires can be different from one company to another.

Refer to if wrong answer:

36- On a wideband tyre with dimensions 445 / 50 R 22.5, what does the number 445 represent?

Refer to if wrong answer:

37- Say in your words, what is the visual difference between the tires #1: 445 / 50 R 22.5, and tire #2: 455 / 55 R 22.5.

Refer to if wrong answer:

QUESTION: 38 The maximum inflation pressure of a tire is indicated on the sidewall by the manufacturer.	
TRUE	
FALSE	
Refer to if wrong answer:	

QUESTION: 39

Identify the most reliable way to find the load capacity of a tire?

ANSWER CHOICE: Only one possible answer **X**
Several possible answers

A) Check in the vehicle door frame.

B) Check the tire manufacturer's book

C) Using a hammer or light mass

D) Check on the Internet

E) Check on the sidewall of the tire

Refer to if wrong answer:

QUESTION 40:

From the following actions below, which one should you do to safeguard the power steering system.

ANSWER CHOICE: Only one possible answer **X**
Several possible answers

A) Avoid turning the steering wheel when the truck is stationary.

B) Ensure proper lubrication of the fifth wheel.

C) Avoid turning the steering wheel to the maximum on either side and holding it, thus forcing it into position.

D) All of the above

Refer to if wrong answer:

Lesson : 2.5.1

QUESTION 41: What is the colour of a typical power steering oil in heavy vehicles?	
ANSWER CHOICE: Only one possible answer X Several possible answers	
A) Red	
B) Blue	
C) Golden	
D) None of these answers	
Refer to if wrong answer:	

Lesson : 2.5.3

QUESTION 42: What is the manufacturer's recommended torque for a disc wheel nut?	
ANSWER CHOICE: Only one possible answer X Several possible answers	
A) 250 lb/po	
B) 300 à 350 lb/pi	
C) 350 à 400 lb/pi	
D) 450 à 500 lb/pi	
Refer to if wrong answer:	

QUESTION: 43

This label is attached to the yellow brake button of a vehicle.

KENWORTH
Kenworth Montréal

AVERTISSEMENT / WARNING

Suite au travail effectué sur le véhicule, un torquage (couple de serrage) est nécessaire avant : 100 km.
Following the work performed on the vehicle, a wheel re-torque is required before: 100 km.

**VOTRE RESPONSABILITÉ: ASSUREZ-VOUS QUE LE TORQUAGE SOIT EFFECTUÉ.
YOUR RESPONSIBILITY: MAKE SURE THAT THE RE-TORQUE IS PERFORMED.**

# Série / Serial #: JD486142	POSITION DES ROUES WHEEL POSITION 
Date de réparation / Repair date: 04/12/19	
Km: 23292	
Couple de serrage: 500 lbs/pi *roue à rayon : 300 lbs/pi Wheel re-torque 500 lbs/pi *spoke wheel: 300 lbs/pi	

**RETIREZ CETTE ÉTIQUETTE UNE FOIS LE COUPLE DE SERRAGE EFFECTUÉ.
REMOVE THIS TAG ONCE THE RE-TORQUE HAS BEEN PERFORMED.**



What is it?

Answer:

Refer to if wrong answer:

Lesson : 2.1.2

Question 44:

When a yellow warning light comes on in the dashboard, you must stop driving with the vehicle as soon as possible.

TRUE

FALSE

Refer to if wrong answer: