

# REVIEW

## Multiple choice question.

---

Lesson 2.1.2	<b>Title:</b>	The dashboard
<b>Skill element targeted:</b>		Distinguishing the particularities of a truck

Sheet to complete - 1

Leçon: 2.1.2

QUESTION: 1	
<b>What color is the truck's parking brake button?</b>	
ANSWER CHOICE: Only one possible answer <b>X</b> Several possible answers	
A) <b>Yellow</b>	<b>X</b>
B) <b>Blue</b>	
C) <b>Red</b>	
D) <b>Green</b>	
Refer to if wrong answer: <b>Lesson 2.1.2 from the student's workbook.</b>	

## Multiple choice question.

Sheet to complete - 2

Lesson: 2.1.2

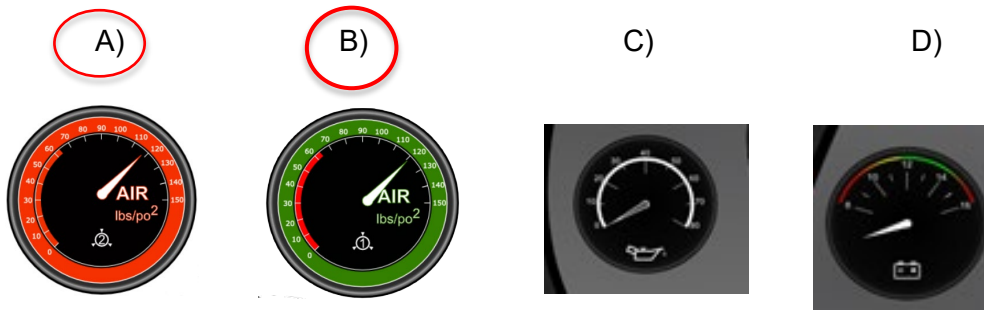
QUESTION: 2

Which of the following gauges represent service tank pressure gauges (primary and secondary)?



ANSWER CHOICE: Only one answer possible  
Several possible answers X

Circle the correct gauges



Refer to if wrong answer:

In the dashboard shown above, the primary pressure gauge is green and the secondary pressure gauge is red. Lesson 2.1.2 from the student's workbook.

## Multiple choice question.

Sheet to be completed - 3

Lesson: 2.1.2

QUESTION: 3

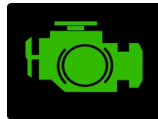
**Which pictogram is associated with a regeneration?**

ANSWER CHOICE: Only one possible answer  X  
Several possible answers

A)



B)



C)



X

D)



Refer to if wrong answer:

**The regeneration pictogram is composed of 2 elements. The first being a "DPF" particulate filter and the second, the exhaust blast. Lesson 2.1.2 from the student's workbook.**

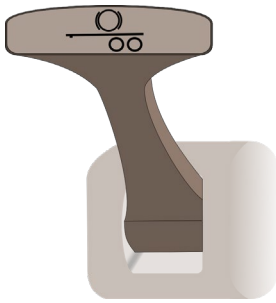
## Multiple choice question.

Sheet to be completed - 4

Lesson: 2.1.2

QUESTION: 4

**What is the purpose of the semi-trailer handbrake lever?**



ANSWER CHOICE: Only one possible answer **X**  
Several possible answers

A) To apply the service brake of the semi-trailer manually.

**X**

B) To apply the parking brake.

C) To recover the semi-trailer in a skidding situation

D) To stop the truck

Refer to if wrong answer:

**Lesson 2.1.2 from the student's workbook.**

## True or False.

---

Sheet to complete - 5

Lesson: 2.1.2

QUESTION: 5

**When a yellow warning light comes on in the dashboard, you must stop driving with the vehicle as soon as possible.**

ANSWER CHOICES :

TRUE

FALSE

X

Refer to if wrong answer:

**Yellow warning lights are warning lights. There is no immediate danger. Lesson 2.1.2 in the Student Notebook.**

## True or False.

---

Sheet to be completed - 6

Lesson: 2.1.2

QUESTION: 6

**The red hexagonal button supplies air to the semi-trailer when pulled.**

ANSWER CHOICES :

TRUE	
FALSE	X

Refer to if wrong answer:

**You must push the red button to power the semi-trailer. Lesson 2.1.2 from the student's workbook.**

