

# Quiz Review

## Multiple choice question.

Sheet to complete - 1

Lesson 2.3.2

QUESTION:

Looking at the shifter knob, how many gears does the transmission have?



ANSWER CHOICE: Only one possible answer **X**  
Several possible answers

A) 8 gears

B) 10 gears

C) 13 gears

D) 18 gears

Refer to if wrong answer:

## Multiple choice question.

---

Sheet to complete - 2

Lesson 2.3.2

QUESTION:

**Which transmissions have half gears (split) among the following?**

ANSWER CHOICE: Only one answer possible  
Several possible answers **X**

A) 8LL gears

B) 10 gears

C) 13 gears

D) 18 gears

Refer to if wrong answer:

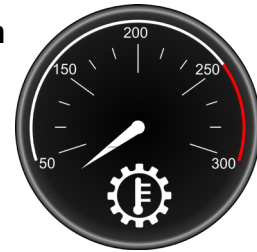
## Multiple choice question.

Sheet to be completed - 3

Lesson 2.3.2

QUESTION:

**What maximum temperature can the transmission reach without any risk of damage?**



ANSWER CHOICE: Only one possible answer **X**  
Several possible answers

A) 10 °C (50 °F)

B) 80 °C (176 °F)

C) 120 °C (250 °F)

D) 177 °C (350 °F)

Refer to if wrong answer:

## Multiple choice question.

---

Sheet to be completed - 4

Lesson 2.3.2

QUESTION:

**What factors can cause transmission oil temperatures to rise?**

ANSWER CHOICES:

A) A high ambient temperature

B) A restricted airflow around the transmission

C) A constant use of maximum engine power (HP)

D) All of the above

Refer to if wrong answer:

## True or False .

---

Sheet to complete - 5

Lesson 2.3.2

QUESTION: Vrai ou Faux

**The role of the transmission is to adapt the RPM speed and engine torque according to the conditions imposed on the truck (starting, climbing, load and speed).**

TRUE	
FALSE	
Refer to if wrong answer:	

## Multiple choice question.

Sheet to be completed - 6

Lesson 2.3.2

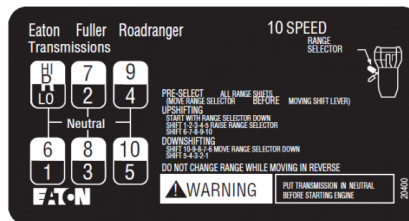
QUESTION:

Associate the knobs(pommel) with the letter of the corresponding transmission diagram.

1



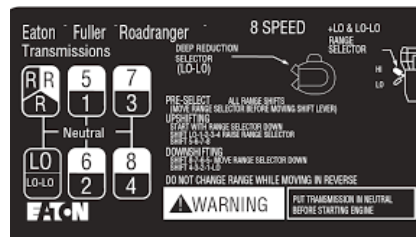
A



2



B



3



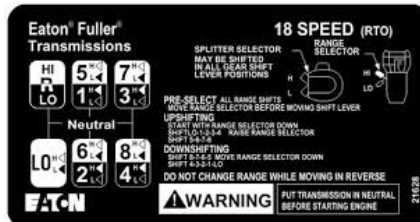
C



4



D



Answer: 1 = \_\_\_\_\_ 2 = \_\_\_\_\_ 3 = \_\_\_\_\_ 4 = \_\_\_\_\_ -

## Missing word(s).

---

Sheet to complete - 7

Lesson 2.3.2

**These are the steps to make a downgrade:**

**Fill in the blank**

1. Maintain the engine revolution stable (example 1000 RPM);
2. Press the clutch pedal while keeping a slight foot contact on the accelerator;
3. Move the transmission shifter out of gear (at neutral) and release the clutch;
4. Increase the engine speed while respecting the RPM gap (example 400 RPM);
5. Press the clutch pedal while \_\_\_\_\_
6. Move the transmission shifter in the desired gear (example the 3rd) and release the clutch.

**Answer:** \_\_\_\_\_

Refer to if wrong answer:

## Multiple choice question.

---

Sheet to complete - 8

Lesson 2.3.2

QUESTION:

**Leaving your hand on the transmission knob continuously, which part(s) of the transmission is likely to be damaged in the long term?**

ANSWER CHOICE: Only one possible answer **X**  
Several possible answers

A) The Gears

B) The transmission forks

C) The transmission shifter

D) All of the above

Refer to if wrong answer:



## Multiple choice question.

---

Sheet to be completed - 9

Lesson 2.3.2

QUESTION:

**What are the factors to consider before selecting the initial gear when moving a heavy vehicle?**

ANSWER CHOICE: Only one answer possible  
Several possible answers **X**

A) The vehicle weight	
B) The terrain	
C) The Wind speed	
D) the Tire wear	

Refer to if wrong answer: