

Review 1 of 4 competency 2

Multiple choice questions.

Leçon 2.2.3

QUESTION 1:

Identify the oil pressure gauges.



ANSWER CHOICE: Only one possible answer **X**
Several possible answers

A) The gauge at the top left

B) The gauge at the bottom left

C) The gauge at the top right

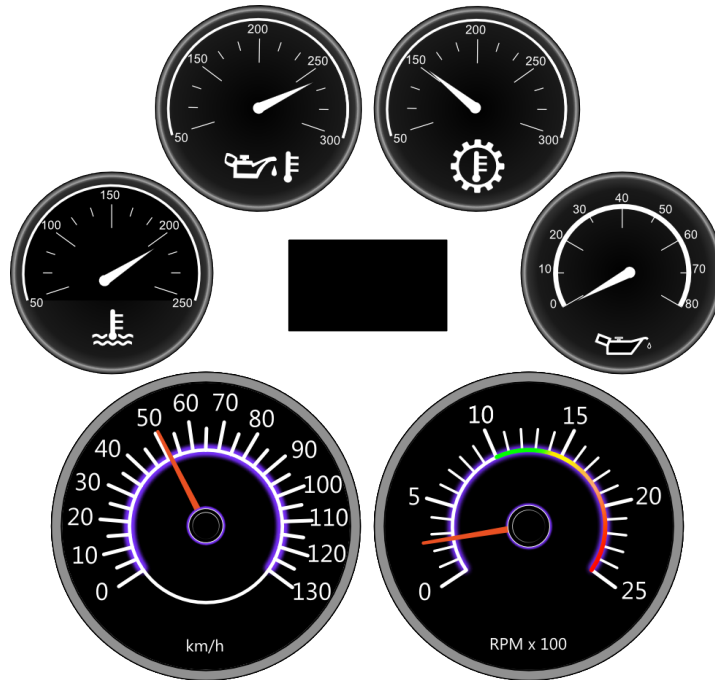
D) The gauge at the bottom right

Refer to if wrong answer:

Leçon 2.1.2

QUESTION 2:

Identify the all the gauges showing an anomaly



ANSWER CHOICE: Only one answer possible
 Several possible answers **X**

A) The coolant temperature gauge

B) The engine oil temperature gauge

C) The transmission oil temperature gauge

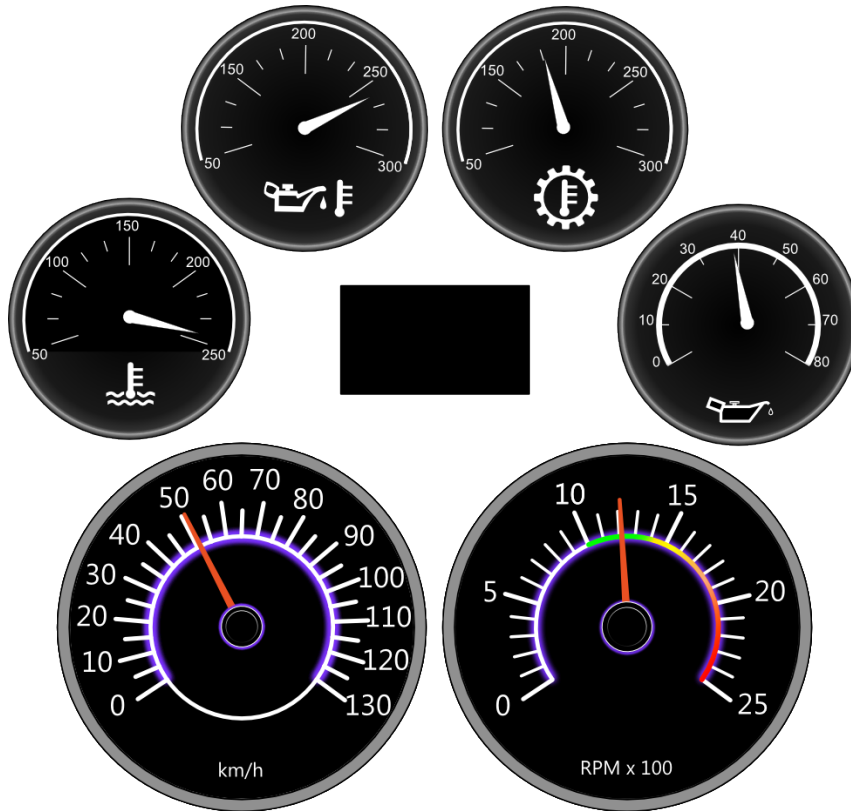
D) The engine oil pressure gauge

E) The revolution per minute gauge (RPM)

Refer to if wrong answer:

QUESTION 3:

Identify the gauge(s) showing an anomaly.



ANSWER CHOICE: Only one answer possible
Several possible answers X

A) The coolant temperature gauge

B) The engine oil temperature gauge

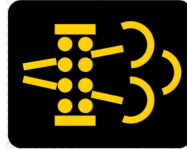
C) The transmission oil temperature gauge

D) The engine oil pressure gauge

Refer to if wrong answer:

QUESTION 4:

What should you do when this indicator light comes on and flashes?



ANSWER CHOICE: Only one possible answer **X**
Several possible answers

A) Do nothing and write it down in the circle check report.	
B) Park, turn the engine off and restart it.	
C) Drive on the highway at normal cruise speed to allow regeneration or park and perform a stationary regeneration.	
D) Park away from trees because the exhaust is very hot.	

Refer to if wrong answer:

QUESTION 5:

What should you do if this indicator light comes on, while driving?



ANSWER CHOICE: Only one possible answer **X**
Several possible answers

A) Park in a safe place and stop the engine

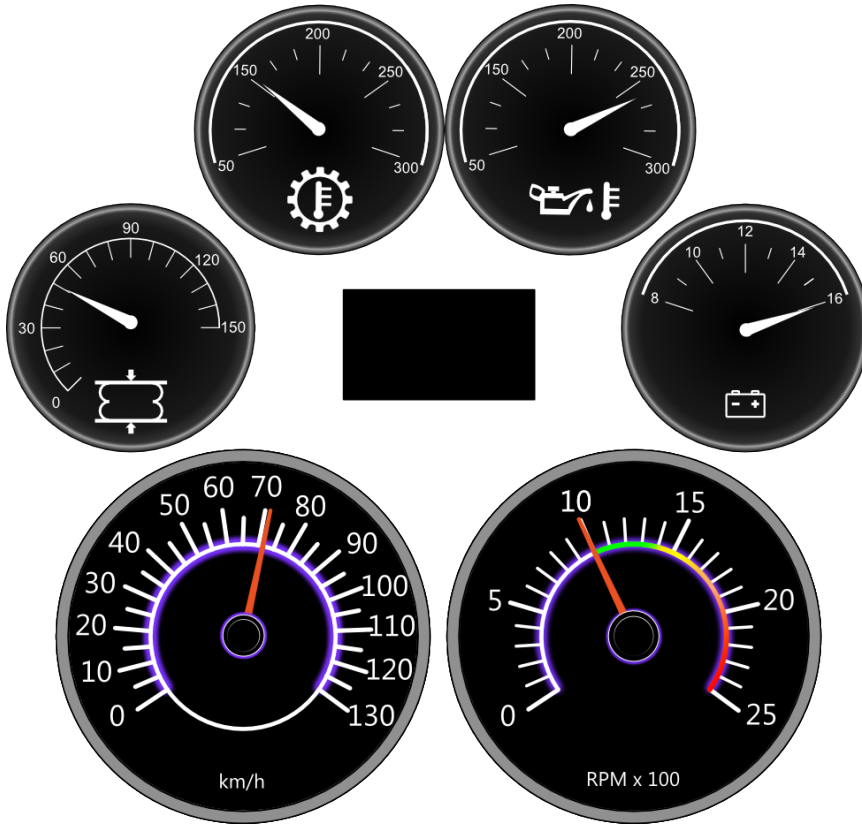
B) Check the other gauges to make sure everything is normal

C) Register the problem in the circle check report at the next stop

D) Downshift to a lower gear to increase the RPM

Refer to if wrong answer:

QUESTION 6:
Which of these gauges represent a defect?



ANSWER CHOICE: Only one answer possible
Several possible answers **X**

A) The electrical system voltage

B) The Engine oil temperature

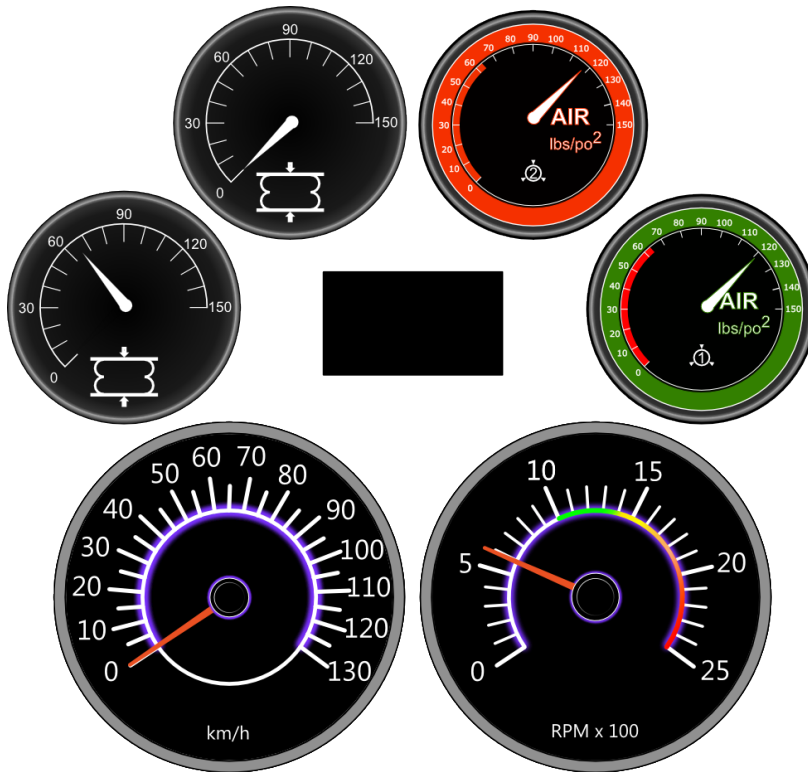
C) The transmission oil temperature

D) The suspension air pressure

Refer to if wrong answer:

Question 7:

Which one of these gauges tells you that you can get out from under your semi-trailer, safely when uncoupling?



ANSWER CHOICE: Only one possible answer **X**
Several possible answers

A) Air gauge 1 with pressure at 120 PSI

B) The suspension gauge with pressure at 65 PSI

C) The suspension gauge with pressure at 0 PSI

D) The air gauge 2 with pressure at 120 PSI

Refer to if wrong answer:

8) Driving with the tractor's suspension deflated (down), what part can be damaged?

Refer to If Wrong Answer: Lesson 2.5.4

QUESTION 9:

1- At what temperature does the diesel exhaust fluid (DEF) freeze?

ANSWER CHOICES:

A) -21C

B) -11C

C) -31C

D) None of the above

Refer to if wrong answer:

10- Associate the pictograms with the correct definition.

#1



#2



#3



Anomaly related to the emission control system. No immediate danger.

Regeneration warning light

Low level of diesel exhaust fluid "DEF"

Refer to if wrong answer:

QUESTION: 11	
Select the most reliable method to use to know the load capacity of a tire?	
ANSWER CHOICE: Only one possible answer X Several possible answers	
Check on the vehicle door frame	
Check the tire manufacturer's book	
Using a hammer or light mass	
Check on the Internet	
Check on the sidewall of the tire	
Refer to if wrong answer:	

QUESTION: 12

Which pictograms are associated with the cooling system?

ANSWER CHOICE: Only one answer possible
Several possible answers **X**



Refer to if wrong answer:

QUESTION: 13

You're driving a truck and coolant temperature light comes on, what should you do?



ANSWER CHOICE: Only one answer possible
Multiple possible answers x

A) Do nothing	
B) stop the vehicle to check the level of coolant in the transparent tank.	
C) Apply the engine brakes	
D) Contact your company's dispatch or mechanic	

Refer to if wrong answer:

QUESTION :14

A coolant level below the minimum required level may cause the engine to shut down.

ANSWER CHOICES :

TRUE	
FALSE	

Refer to if wrong answer:

QUESTION: 15

What are the normal operating temperatures of the cooling system?



ANSWER CHOICE: Only one possible answer **X**
Several possible answers

A) 180 °F and 205 °F

B) 190 °F and 245 °F

C) 100 °F and 150 °F

D) 200 °F and 300 °F

Refer to if wrong answer:

QUESTION: 16

Which pictogram represents the coolant temperature?

ANSWER CHOICE: Only one possible answer X
Several possible answers

A)



B)



C)



D)



Refer to if wrong answer:

QUESTION: 17

Which pictogram is associated with low coolant levels?

ANSWER CHOICE: Only one possible answer X
Several possible answers

A)



B)



C)



D)



Refer to if wrong answer:

QUESTION : 18

Identify the pictograms associated to the lubrication system.

ANSWER CHOICE: Only one answer possible
Several possible answers **X**

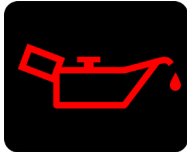
A)



B)



C)



D)



Refer to if wrong answer:

QUESTION: 19

Identify statements that are true.

ANSWER CHOICE: Only one answer possible
Several possible answers **X**

A) The oil pressure is abnormally high (higher than the manufacturer's specifications) during a cold start in winter.

B) Adding oil is not necessary when the level is between the two marks on the dipstick.

C) 10w-30 grade engine oil can be added to all engines.

D) Always check the oil level before starting the engine.

Refer to if wrong answer:

QUESTION: 20

When the red oil pressure light comes on, I must park safely as quickly as possible and shut down the engine.

ANSWER CHOICES:

TRUE

FALSE

Refer to if wrong answer:



QUESTION: 21

Engine oil pressure is influenced by engine temperature and revolution.

ANSWER CHOICES:

TRUE	
FALSE	

Refer to if wrong answer:

QUESTION: 22

Where can you find the information to make the right choice of engine oil?

ANSWER CHOICE: Only one answer possible
Several possible answers **X**

The filler cap or sticker nearby	
The manufacturer's manual	
The fleet mechanic	
None of the above	

Refer to if wrong answer:

QUESTION: 23

Among the following gauges, which allow you to check the good working condition of your electrical system.

ANSWER CHOICE: Only one answer possible
Several possible answers X

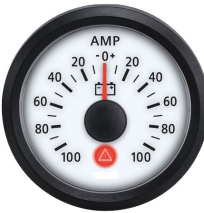
A)



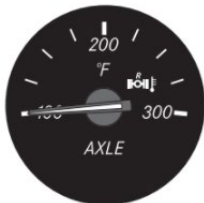
B)



C)



D)

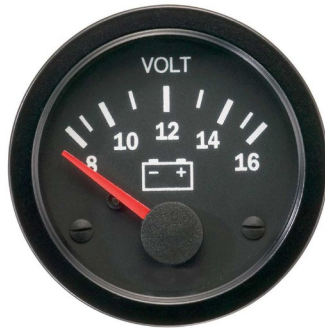


Refer to if wrong answer:

Leçon: 2.2.4

QUESTION: 24

What should be the normal voltage reading of the charging system when travelling at cruising speed?



ANSWER CHOICE: Only one possible answer **X**
Several possible answers

A) Between 10 and 12 volts

B) Between 8 and 10 volts

C) Approx. 14 volts

D) Approx. 12 volts

Refer to if wrong answer:

Leçon: 2.2.5

QUESTION: 25

What happens when a hose clips loosen on the Air to Air system manifold?

ANSWER CHOICE: Only one possible answer X
Several possible answers

A) Risk of power loss

B) Risk of engine overheating

C) Risk of loss of refrigerant

D) All of the above

Refer to if wrong answer:

Leçon: 2.2.5

QUESTION: 26

What can cause the engine protection system to activate the derate cycle?

ANSWER CHOICE: Only one answer possible
Several possible answers **X**

A) Exhaust fluid (DEF) level too low

B) A heavily clogged of the particulate filter

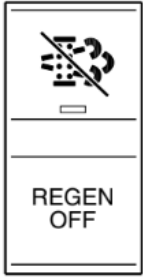
C) Low fuel level

D) A clogged fuel filter

Refer to if wrong answer:

Leçon: 2.2.5

QUESTION: 27



This switch is used to activate a regeneration of the emission control system.

ANSWER CHOICES:

TRUE

FALSE

Refer to if wrong answer:

Leçon: 2.2.5

QUESTION: 28

Diesel exhaust fluid "DEF" is very resistant to cold, as the diesel fuel.

ANSWER CHOICES:

TRUE

FALSE

Refer to if wrong answer:

Leçon: 2.2.5

QUESTION: 29

What is the meaning of this warning light.



ANSWER CHOICE: Only one possible answer **X**
Several possible answers

A) The system needs a parked regeneration

B) High temperature of the exhaust system.

C) High temperature of the cooling system

D) High temperature of the pneumatic system.

Refer to if wrong answer:

Leçon: 2.2.5

QUESTION: 30

What is the meaning of this warning light.



ANSWER CHOICE: Only one possible answer X
Several possible answers

A) Anomaly related to the anti-pollution system

B) DEF liquid level too low

C) The system needs a parked regeneration

D) You must fill up the diesel fuel tanks.

Refer to if wrong answer:

Leçon: 2.2.5

QUESTION: 31

What is the meaning of this warning light.



ANSWER CHOICE: Only one possible answer **X**
Several possible answers

A) Anomaly associated with the anti-pollution system


B) High exhaust system temperature

C) DEF liquid level too low

D) Manual fan

Refer to if wrong answer:

Leçon: 2.2.5

<p>QUESTION: 32</p> <p>What is the meaning of this warning light ?</p> 	
<p>ANSWER CHOICE: Only one possible answer X Several possible answers</p>	
A) Anomaly associated to the anti-pollution system	
B) Engine anomaly: You need to check your gauges, no immediate danger.	
C) Highly clogged air filter	
D) A regeneration must be performed, either while driving or parked	
Refer to if wrong answer:	

Leçon: 2.5.4

<p>QUESTION 33:</p> <p>Which of the following statements is <u>false</u>?</p>	
<p>ANSWER CHOICE: Only one possible answer X Several possible answers</p>	
A) The GVWR on the door frame specifies the maximum permissible weight on the steering axle.	
B) The suspension dump switch allows to evacuate the air pressure inside the air bags before uncoupling.	
C) A self-steering axle is an axle that can be lifted when turning conditions are very difficult.	
D) There are two types of gauges connected to the suspension system. A PSI pressure gauge (psi) and a gauge showing the weight in pounds or kg below the axle group.	
Refer to if wrong answer	

Leçon: 2.5.4



QUESTION 34:

The higher the weight of the load, the higher the pressure will be on the suspension pressure gauge.

ANSWER CHOICES:

TRUE

FALSE

Refer to if wrong answer:

Leçon: 2.5.4

QUESTION 35:

Why should a tractor suspension be deflated when uncoupling a semi-trailer?

ANSWER CHOICE: Only one possible answer **X**
Several possible answers

A) To avoid breaking the fifth wheel.

B) To avoid flat tires on the tractor.

C) To prevent damaging the suspension components.



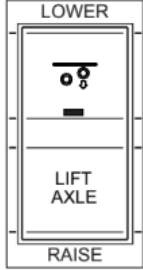
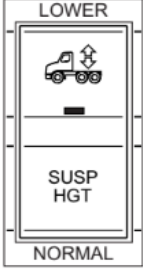
D) To prevent transmission damages.

Refer to if wrong answer:

Leçon: 2.5.4

QUESTION 36:
Identify the switch connected to the truck suspension system, not the trailer.

ANSWER CHOICE: Only one possible answer **X**
Several possible answers

A) 	
B) 	
C) 	
D) 	
Refer to if wrong answer	