

# Review Brake (1)

## Multiple choice question

Sheet to be completed -

1 Lesson: 2.4.1

QUESTION:

From the following illustrations, identify the air compressor.

ANSWER CHOICE: Only one possible answer **X**  
Several possible answers

A)



B)



C)



D)



Refer to if wrong answer:

## Multiple choice question

Sheet to be completed -

2 Lesson: 2.4.1

QUESTION:

**Identify the part whose role is to start and stop the compressor.**

ANSWER CHOICE: Only one possible answer **X**  
Several possible answers

A)



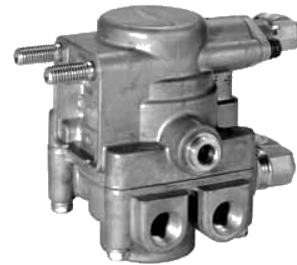
B)



C)



D)



Refer to if wrong answer:

## Multiple choice question

Sheet to be completed -

3 Lesson: 2.4.1

QUESTION:

Identify the part that contains the parking brake spring.

ANSWER CHOICE: Only one possible answer **X**  
Several possible answers

A)



B)



C)



D)



Refer to if wrong answer:

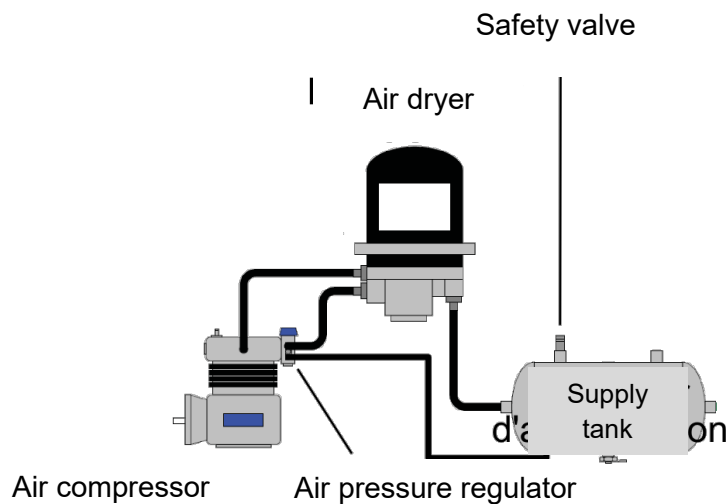
## Multiple choice question

Sheet to be completed - 4

Lesson: 2.4.1

QUESTION:

Using the diagram below, identify the path of the compressed air.



ANSWER CHOICE: Only one possible answer **X**  
Several possible answers

A) Air compressor; pressure regulator; supply tank

B) Pressure regulator; air dryer; supply tank

C) Air compressor; air dryer; supply tank

D) Pressure regulator; air dryer; air compressor

Refer to if wrong answer:

## True or False

---

Sheet to be completed - 5

Lesson: 2.4.1

QUESTION:

**This control releases the tractor's parking brake when pressed.**



ANSWER CHOICES:

TRUE	
FALSE	

Refer to if wrong answer:

## True or False

---

Sheet to be completed -

6 Lesson: 2.4.1

QUESTION:



**The supply tank stores compressed air from the compressor and feeds the service tanks of the primary and secondary systems.**

ANSWER CHOICES:

TRUE	
FALSE	

Refer to if wrong answer:

## True or False

Sheet to be completed -

7 Lesson: 2.4.1

QUESTION:

**The parking brake is also the emergency brake and works mechanically.**



ANSWER CHOICES:

True

False

Refer to if wrong answer

## True or False

---

Sheet to be completed -

8 Lesson: 2.4.1

QUESTION:

**The parking brake must be applied to perform the leak test during the brake test.**

ANSWER CHOICES:

True	
False	

Refer to if wrong answer:



## True or False

---

Sheet to be completed -

9 Lesson: 2.4.1

QUESTION:

**When the vehicle speed is doubled, the braking distance is twice as long.**

ANSWER CHOICE:

True	
False	

Refer to if wrong answer:

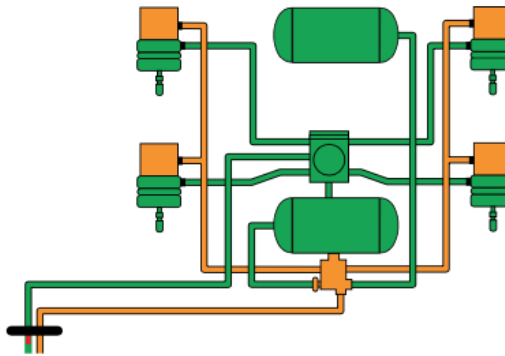
## Multiple choice question

Sheet to be completed - 10

Lesson: 2.4.1

QUESTION:

Using the diagram below, identify the green part of the systems?



ANSWER CHOICE: Only one possible answer **X**  
Several possible answers

A) The service brake part

B) The parking brake part

C) The service and parking brake part

D) The compressor part

Refer to if wrong answer: