

Review

Multiple choice question

Sheet to be completed - 1

Lesson: 2.4.1

QUESTION:

From the following illustrations, identify the air compressor.

ANSWER CHOICE: Only one possible answer **X**
Several possible answers

A)



B)



C)



D)



Refer to if wrong answer: **Student book lesson 2.4.1 p.90**

Multiple choice question

Sheet to be completed - 2

Lesson: 2.4.1

QUESTION:

Identify the part whose role is to start and stop the compressor.

ANSWER CHOICE: Only one possible answer **X**
Several possible answers

A)



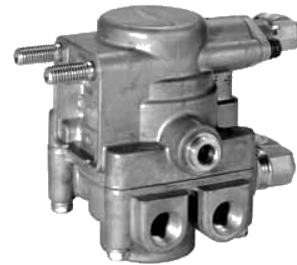
B)



C)



D)



Refer to if wrong answer: **Student book Air pressure regulator lesson 2.4.1 p.90**

Multiple choice question

Sheet to be completed - 3

Lesson: 2.4.1

QUESTION:

Identify the part that contains the parking brake spring.

ANSWER CHOICE: Only one possible answer **X**
Several possible answers

A)



B)



C)



D)



Refer to if wrong answer: **Dual brake booster student book lesson 2.4.1 p.94**

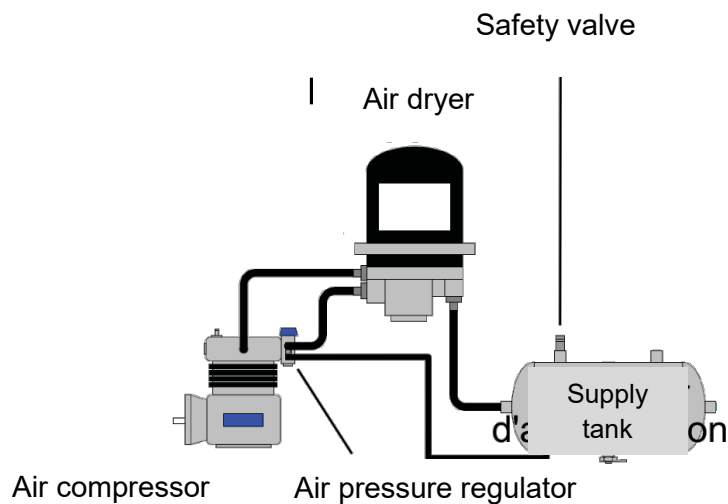
Multiple choice question

Sheet to be completed - 4

Lesson: 2.4.1

QUESTION:

Using the diagram below, identify the path of the compressed air.



ANSWER CHOICE: Only one possible answer **X**
Several possible answers

A) Air compressor; pressure regulator; supply tank

B) Pressure regulator; air dryer; supply tank

C) Air compressor; air dryer; supply tank

D) Pressure regulator; air dryer; air compressor

Refer to if wrong answer: **Student book lesson 2.4.1 p.90**

True or False

Sheet to be completed - 5

Lesson: 2.4.1

QUESTION:

This control releases the tractor's parking brake when pressed.



ANSWER CHOICES:

TRUE

FALSE

X

Refer to if wrong answer: **This control releases the trailer's brake when pushed. Student book lesson 2.4.1 p.94**

True or False

Sheet to be completed - 6

Lesson: 2.4.1

QUESTION:



The supply tank stores compressed air from the compressor and feeds the service tanks of the primary and secondary systems.

ANSWER CHOICES:

TRUE

X

FALSE

Refer to if wrong answer: **Student book lesson 2.4.1 p.91 and 93**

True or False

Sheet to be completed - 7

Lesson: 2.4.1

QUESTION:

The parking brake is also the emergency brake and works mechanically.



ANSWER CHOICES:

True

X

False

Refer to if wrong answer **Student book lesson 2.4.1 p.95**

True or False

Sheet to be completed - 8

Lesson: 2.4.1

QUESTION:

The parking brake must be applied to perform the leak test during the brake test.

ANSWER CHOICES:

True	
False	X

Refer to if wrong answer: **Student book lesson 2.4.1 p.95**

True or False

Sheet to be completed - 9

Lesson: 2.4.1

QUESTION:

When the vehicle speed is doubled, the braking distance is twice as long.

ANSWER CHOICES:

True	
False	X

Refer to if wrong answer: **Student book lesson 2.4.1 p.87**

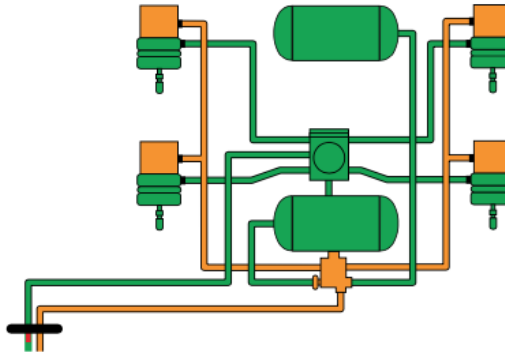
Multiple choice question

Sheet to be completed - 10

Lesson: 2.4.1

QUESTION:

Using the diagram below, identify the green part of the systems?



ANSWER CHOICE: Only one possible answer **X**
Several possible answers

A) The service brake part

X

B) The parking brake part

C) The service and parking brake part

D) The compressor part

Refer to if wrong answer: **DHV chapter 4 page 106**