

Review

Multiple choice question.

Sheet to be completed - 1

Leçon: 2.2.4

QUESTION:

Which of the following gauges can be used to check the good working condition of your electrical system?

ANSWER CHOICE: Only one answer possible
Several possible answers **X**

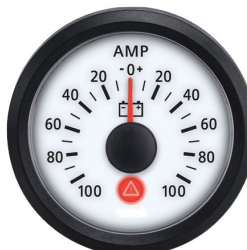
A)



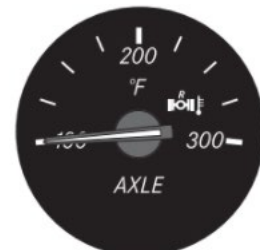
B)



C)



D)







Refer to if wrong answer:

The voltmeter and ammeter (optional) are the two dials of the charging system. Lesson 2.2.4 from the student's workbook.

Multiple choice questions.

Sheet to be completed - 2

Leçon: 2.2.4

QUESTION: Identify the warning lights related to the charging system	
ANSWER CHOICE: Only one answer possible Several possible answers X	
A) 	
B) 	
C) 	X
D) 	X
Refer to wrong answer: Lesson 2.2.4 from the student's workbook.	

Multiple choice questions.

Sheet to be completed - 3

Leçon: 2.2.4

QUESTION:

What is the normal voltage of a charging system, when the vehicle is travelling at cruising speed?



ANSWER CHOICE: Only one possible answer **X**
Several possible answers

A) Between 10 and 12 volts

B) Between 8 and 10 volts

C) Approx. 14 volts

X

D) Approx. 12 volts

Refer to if wrong answer:

**At cruising speed, the voltage of the system tends towards its maximum.
Lesson 2.2.4 from the student's workbook.**

True or False

Sheet to be completed - 4

Leçon: 2.2.4

QUESTION:

The voltmeter of a vehicle that has been stationary for several hours normally indicates 12 volts.

ANSWER CHOICES:

TRUE

X

FALSE

Refer to if wrong answer:

The cold or idle voltage is normally at its minimum, either 12 volts. Lesson 2.2.4 from the student's workbook.

True or False

Sheet to be completed - 5

Leçon: 2.2.4

QUESTION:

The amp meter of a charging system in good condition normally indicates the negative zone.

ANSWER CHOICES:

TRUE	
FALSE	X

Refer to if wrong answer:

The ammeter of a good load system normally indicates the positive zone, as this zone reflects the level of activity of the alternator.

Lesson 2.2.4 from the student's workbook.