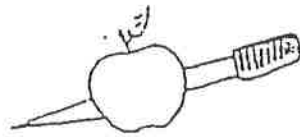




CRAMPE



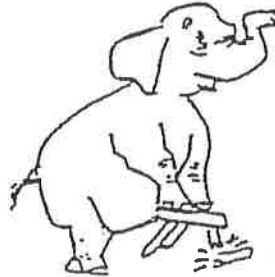
COUP DE POIGNARD



ÉLANCEMENT



PINCZEMENT



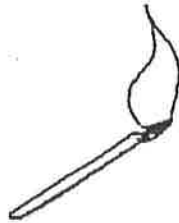
PESANTEUR



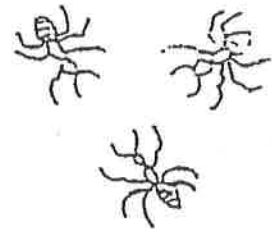
TENSION / TORDANTE



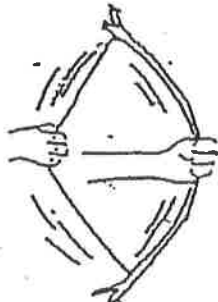
CHOC ÉLECTRIQUE



BRÛLURE



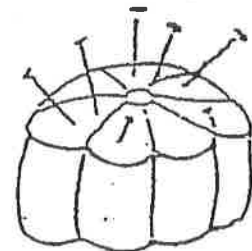
FOURMILLEMENT



ÉTIREMENT



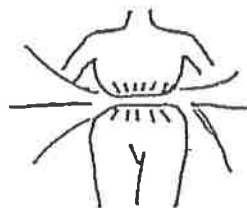
MARTELEMENT



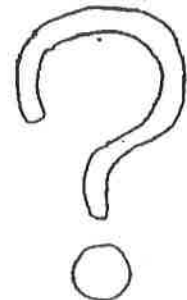
ENGOURDISSEMENT /
PICOTEMENT



IRRADIANTE



SERREMENT



AUTRES